



Community Strategic Plan

Walcha – 2027



Prepared in accordance with the requirements of the Local Government (Planning and Reporting) Amendment Act 2009

Adopted by Walcha Council on TBA

Document History

Version	Date	Details
A – E		Drafts prepared and amended based on consultation with the community and Council.
1	25 May 2011	Adopted by Council
R3	In progress	June 2013 Review – after Council meeting 29/5/2013
R4	26 June 2013	Adopted by Council
R5	January 2017	Drafts being prepared.
R6	February 2017	Draft prepared for Public Exhibition

Contents

Introduction	4
The development of our community strategic plan	5
Walcha – who and where	6
Guiding principles	8
State and regional context	8
How has Walcha 2027 originally developed?	8
Issues and challenges	10
Framework	11
Vision statement	12
How to read Walcha 2027	13
Themes and Outcomes	14
Goals and Strategies	16
Transport	16
Business and Jobs	17
Health	20
Education and Training	22
Stronger Community	23
Local Environment & Liveable Communities	28
Keeping People Safe	31
Better Government	32
Abbreviations	35
List of community groups	36
List of Walcha Council Committees	37

Introduction

Walcha 2027 is the blueprint for the future of Walcha Local Government Area. It represents the vision, aspirations, goals, priorities and challenges for our community. The purpose of Walcha 2027 is to:

- ❖ Describe the vision and goals the community has for this local government area.
- ❖ Outline the strategies to achieve the vision and goals.
- ❖ Provide a long term focus for decision making and resource allocation.
- ❖ Provide a basis for measuring our progress.
- ❖ Provide an opportunity for community participation in decision making.
- ❖ Address social, economic, environmental and civic leadership issues.

Walcha 2027 has been developed by the community and will be maintained and implemented by Walcha Council on behalf of the community. It is a plan for the future of the Local Government Area and will be a guide for other levels of government, private businesses and non-government agencies.

The Plan was first adopted by Council in May 2011 and reviewed by Council in 2013. This Plan is now being revised and updated with the goal to be adopted by June 2017.

The development of our community strategic plan

As a result of legislation enacted in October 2009, all New South Wales local councils are required by the Local Government Act 1993 to develop a community strategic plan. The plan must:

- ❖ Have a long-term focus, with a minimum of 10 years.
- ❖ Address the key issues of social, environmental and economic sustainability as well as civic leadership.
- ❖ Be delivered as a partnership between Council, state agencies, community groups and individuals.
- ❖ Consider the State Plan and any relevant State or regional draft plans and strategies.
- ❖ Have regard for an adopted community engagement strategy, showing how the Council will communicate with and consult its community to develop a draft plan.
- ❖ Provide for a resourcing strategy that describes how community assets will be used in the future, how the Council workforce will be managed to deliver the desired plan outcomes and a financial plan to show how the plan will be funded.
- ❖ Give consideration to the expected levels of service expressed by the community.
- ❖ Include a community vision statement, strategic objectives and strategies for achieving the objectives.
- ❖ Identify assessment methods for determining whether the objectives are being achieved.
- ❖ Outline how progress in implementing the plan will be measured and monitored
- ❖ Provide for the Council to progressively report to the community on progress and achievements.

Walcha – who and where

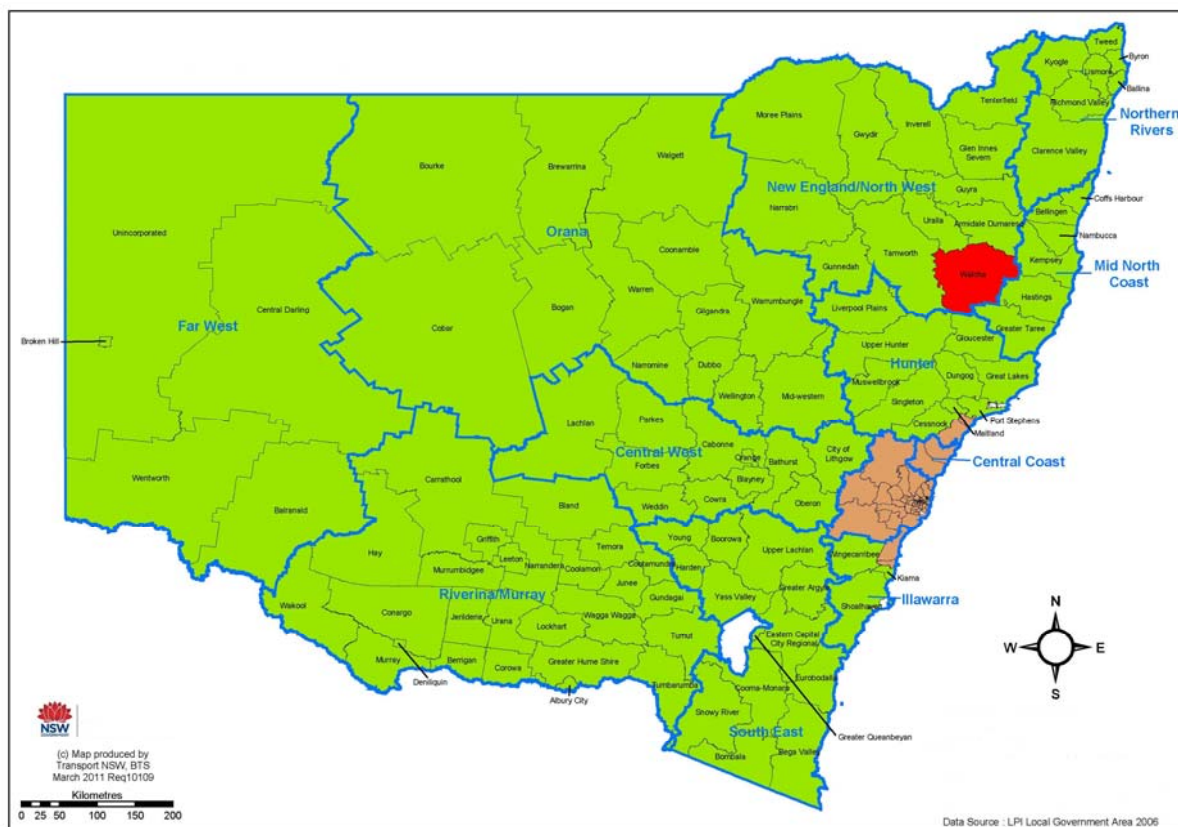
Walcha is located in the beautiful and very productive New England Tablelands region of New South Wales. The Walcha Local Government Area has an area of 640,858 hectares and a total population of 3,187 people.

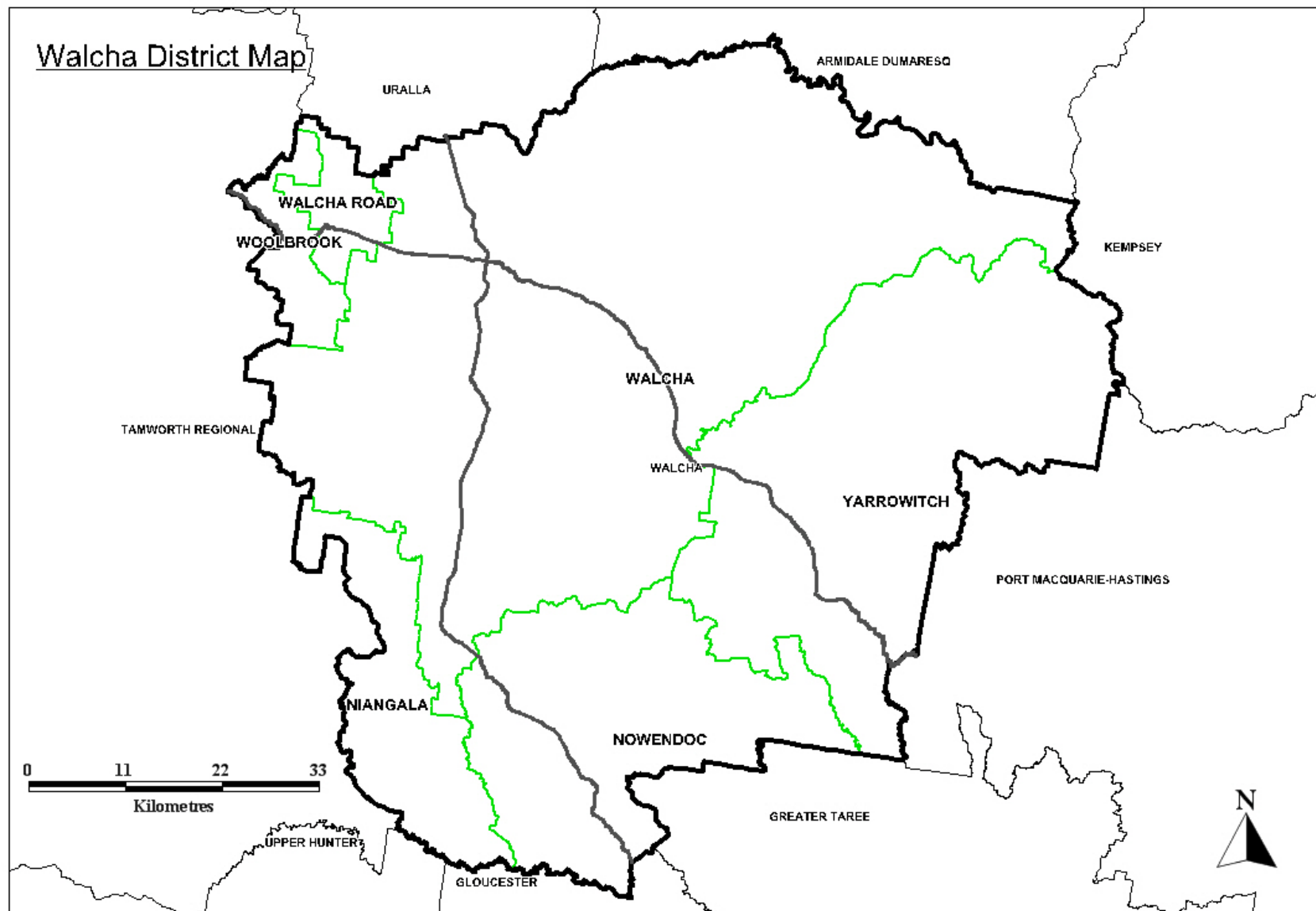
The town of Walcha (pronounced wolka) is 1,067 metres above sea level and can be reached by road, rail and air.

With 184,000 hectares of national park and wilderness including parts of the world heritage listed Central Eastern Rainforest Reserves, approximately 50,000 hectares of state forests and a network of excellent trout waters, Walcha provides the opportunity for some of the most magnificent eco-experiences in Australia.

Apart from these wonderful eco-tourism destinations, the area has a lot to offer. It is one of the most productive agricultural regions in Australia. It is also a major hardwood timber supplier and is a significant supplier of softwood.

Walcha Council New South Wales





Guiding principles

The principles and values that underpin the framework for developing Walcha 2027 are social justice and sustainability. These principles and values were genuinely considered when developing the goals and strategies contained in this plan. All goals and strategies seek to attain an outcome that is sustainable and strives for equity, access, participation and equal rights, particularly for the disadvantaged and vulnerable.

Social Justice

Equity:	Decisions should reflect equality in the prioritising and allocation of resources.
Access:	All people should have access to services, resources and opportunities to maintain and improve their quality of life.
Participation:	Everyone should have the opportunity to genuinely participate in decisions which affect their lives.
Rights:	Equal rights should be established and promoted, with opportunities provided for people from diverse linguistic, cultural and religious backgrounds to participate in community life.

Sustainability

Walcha 2027 has the foundations and principles of sustainability. Sustainability describes the integration of environmental, social, economic and governance goals, processes and performances. However, these elements are not always in harmony.

State and regional context

It is important that the Plan also be considered in a State and regional context as this will have an impact on the Walcha Local Government Area. The NSW Making it Happen – Premier's Priorities and State Priorities and the Draft New England North West Regional Plan were considered during the review of Walcha 2027 and the relevant priority areas have been referenced in each theme.

How has Walcha 2027 originally developed?

Walcha 2027, as developed by the community, has become the blueprint for the future of the Walcha Local Government Area. A number of methods were used to gather feedback from a wide range of people in our community including residents, business owners, Councillors, government agencies, Council staff and other stakeholders.

The following is a list of the focus groups that have been consulted.

Focus Group

Community Care Women's Group and Advisory Committee

Woolbrook School Community

Walcha Men's Shed

Beautification Committee, Arts Committee, Country Women's Association and Walcha Historical Society

Focus Group

Community Care Men's Group
Preschool / Family Day Care / Early Intervention / Child Care
Groups
Walcha Rotary Club
Walcha Central School Parents and Citizens
Yarrowitch Community
Brackendale / Tia Community
Nowendoc Community
Aboriginal Education Consultative Group
Walcha Central School Staff
Landcare groups, Department of the Environment and Climate
Change and Southern New England Landcare
Niangala School Community
Woolbrook Community
Ingleba Community
Walcha Quota Club
Walcha Council Indoor Staff
Religious Contingent
Transport Companies
Emergency Services
Walcha Council Outdoor Staff
Tourism Groups
Festival / Events groups
St Patricks School Board
State Government Organisations
Youth Committee
Hospital Staff
Apsley Riverview Staff
Lions and Lions Ladies Clubs
Sporting Groups, Business Houses and Public Invitation

Engagement with the community is ongoing throughout the life of the Plan and the Community Engagement Strategy will be used to carry out future reviews.

Issues and challenges

The issues and challenges that were identified when Walcha – 2027 was first developed in 2011 still remain. They include:

Improving the Economic Sustainability of Walcha.

Maintaining the Feel and Identity of Walcha

- ❖ Representation and leadership.
- ❖ Reversing decline and achieving critical population size
- ❖ Age succession of volunteers.
- ❖ Retaining families in Walcha.
- ❖ Public community transport.
- ❖ Maintaining health providers, police and key agencies.
- ❖ Self sufficiency in energy and water.
- ❖ Remaining an appealing competitive community.
- ❖ Transportation and the road network

Retaining and Attracting Young People in Walcha

- ❖ Promote trades apprentices and traineeships.

Maintaining Environmentally Sustainable Agricultural Activities

- ❖ Outside pressures e.g. unreasonable rules and regulations imposed by others.
- ❖ Education partnerships with city centric sensitivities around agriculture.
- ❖ The potential affect of the Murray-Darling Basin Authority.

Attracting New Enterprises and Jobs

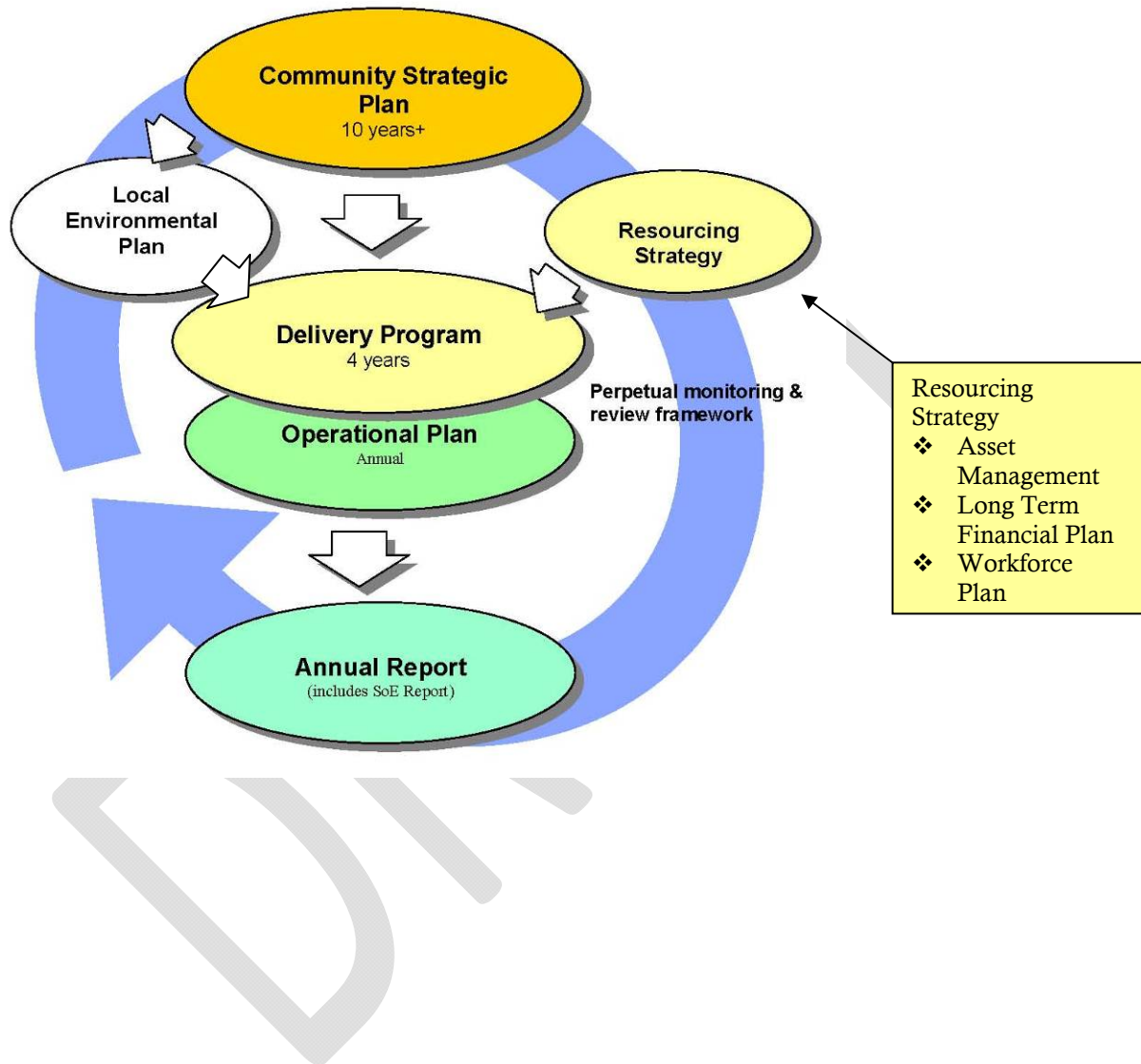
- ❖ Attract new enterprises and value adding to existing business.
- ❖ Difficulty of attracting support funding.

Environment

- ❖ Climate change
- ❖ Renewable energy

Framework

Walcha 2027 was developed to fit into the framework required by the NSW Government. It is the overarching document that is supported and integrated into all of Council's other planning documentation.



Vision statement

**To be a vibrant, welcoming, resilient
and sustainable community that
supports our citizens, businesses,
industries and environments.**

The content of Walcha 2027 was developed to achieve the Vision taking into account the current and anticipated challenges and issues as well as other plans and strategies relevant to the Walcha Local Government Area.

In the Vision Statement the term 'environments' not only includes the natural environment but also the man-made or built environment and the social and cultural environment that has and will continue to shape the Walcha community.

How to read Walcha 2027

Walcha 2027 is comprised of eight themes. They are:

- ❖ Transport
- ❖ Business and Jobs
- ❖ Health
- ❖ Education and Training
- ❖ Stronger Community
- ❖ Local Environment and Liveable Communities
- ❖ Keeping People Safe
- ❖ Better Government

These themes provide the focus and direction for the development of goals and strategies. The goals and strategies create the framework for the delivery of sustainable and equitable outcomes to achieve our vision.

Each theme contains a number of goals which are the aspirations or destinations as identified or described for 2027 and beyond. Each goal contains a number of strategies which were developed as the pathways to achieving these goals. Council's role in the implementation of each strategy is identified and defined as follows:

- Leader: Council will lead the development and implementation of detailed plans and actions to implement this strategy and to achieve progress towards the identified goal.
- Facilitator: Council will facilitate the development and implementation of detailed plans and actions with other stakeholders to implement this strategy and achieve progress toward the identified goal.
- Advocate: Council will advocate for the development and implementation of detailed plans and actions with other stakeholders to implement this strategy and achieve progress toward the identified goal.

Throughout Walcha 2027 the terms 'our' and 'community' are used frequently. Unless specified otherwise both terms are intended to mean the whole of the Walcha community including:

- ❖ Community groups and organisations
- ❖ Local businesses
- ❖ Walcha Council
- ❖ Non-government organisations
- ❖ Government agencies
- ❖ Individuals:
 - Ratepayers
 - Residents
 - People who work in the Local Government Area
 - Visitors
 - Anyone with an interest in the future of the Local Government Area

Unless specified otherwise, the term 'Walcha' includes not only the area within the township of Walcha but also the area within the whole of the Local Government Area managed by Walcha Council.

Themes and Outcomes

Transport

- CSP 1.1 Walcha will be serviced by an integrated and efficient transport network.

Business and Jobs

- CSP 2.1 Commercial and tourist development will be promoted and encouraged to grow in harmony with the natural environment, to take maximum advantage of commercial opportunities and to increase local employment.

Health

- CSP 3.1 Health services and facilities will be provided and where appropriate managed locally to meet the needs of the community.
- CSP 3.2 The public health and wellbeing of the community will be protected and enhanced.

Education and Training

- CSP 4.1 Education and training opportunities will be provided that deliver the skills and knowledge needed to advance the community.

Stronger Community

- CSP 5.1 Social services will be planned, maintained and coordinated so that they meet the current and future needs of all groups in the community.
- CSP 5.2 The existing strong community spirit and pride will be protected and promoted.
- CSP 5.3 Walcha's cultural identity will be enhanced.
- CSP 5.4 Walcha's Aboriginal communities will be supported and strengthened.
- CSP 5.5 Young people will be retained and supported to live in Walcha.
- CSP 5.6 People of all ages and abilities will be encouraged to participate in cultural, recreational and sporting activities.
- CSP 5.7 Community members will be given the opportunity to develop their leadership skills so that they can better participate in the leadership of the community.

Local Environment & Liveable Communities

- CSP 6.1 Walcha's distinct and diverse natural and built environment will be protected and enhanced.
- CSP 6.2 Solid waste will be managed in a sustainable manner with a continuing reduction in waste generation and disposal to landfill.
- CSP 6.3 Water supply and sewerage services will be physically and environmentally sensitive.
- CSP 6.4 Walcha will increase the use and production of renewable energy.
- CSP 6.5 Agricultural activities will be environmentally sustainable.
- CSP 6.6 The character of Walcha and its surrounding villages will be maintained while protecting the productivity of our rural land.

Keeping People Safe

- CSP 7.1 Police stations and staff numbers will be provided to effectively control and reduce crime and antisocial behaviour and to keep our community safe.
- CSP 7.2 Emergency Services will be provided to ensure the safety of our community and visitors.

Better Government

- CSP 8.1 Walcha Council will exemplify good leadership, mutual respect and trust by being inclusive, ensuring open information and communication and encouraging active participation at all levels.
- CSP 8.2 Council rate funding for local government projects will be supplemented by income generated from other sources.
- CSP 8.3 The boundaries of the Walcha Local Government Area will be modified to reflect existing and developing communities of interest.

Goals and Strategies

Transport



Photo 1: View looking to Thunderbolts Way

Goals and Strategies

CSP 1.1	Walcha will be serviced by an integrated and efficient transport network.	Council's Role	Other Stakeholders
1.1.1	Develop and maintain a safe and efficient local road and bridge network.	Leader Facilitator Advocate	Transport for NSW, Aust Govt
1.1.2	Maintain safe and efficient regional and state road links to, from and through the Walcha Local Government Area.	Leader Advocate	Transport for NSW, Aust Govt
1.1.3	Maintain and increase the rail passenger service and the use of rail for freight.	Advocate	Transport for NSW
1.1.4	Maintain and improve the standard and competitiveness of our regional air services.	Advocate	Aust Govt
1.1.5	Improve community and public transport.	Facilitator Advocate	Transport for NSW
1.1.6	Provide and maintain facilities for the safe movement of pedestrian and cycle traffic.	Leader Facilitator Advocate	NSW Govt

NSW Making it Happen – State Priorities Links

- Infrastructure
 - ✓ Improving road travel reliability
- Better services

- ✓ Ensure on-time running for public transport

Other Relevant Plans and Strategies

- 2036 Draft New England North West Regional Plan



Business and Jobs



Goals and Strategies

CSP 2.1	Commercial and tourist development will be promoted and encouraged to grow in harmony with the natural environment, to take maximum advantage of commercial opportunities and to increase local employment.	Council's Role	Other Stakeholders
2.1.1	Maintain and improve the appearance of the Walcha Local Government Area to increase tourist and commercial activity.	Leader	Community Groups, Council Committees
2.1.2	Develop and market tourism products targeting identified markets.	Leader	Destination NSW
2.1.3	Develop activities that encourage increased visitation frequency and stay length.	Leader Facilitator	Destination NSW
2.1.4	Assist, support and encourage the establishment and / or expansion of local businesses.	Advocate	DPI
2.1.5	Promote Walcha's suitability for the aged care community and associated industries.	Facilitator Advocate	ADHC
2.1.6	Develop an environment that will attract technology or internet based industry to come to Walcha.	Advocate	Telecommunication providers NBN
2.1.7	Provide the services that appeal to "young" workers e.g. childcare, medical, housing, sporting facilities and parks.	Leader, Advocate	

2.1.8 Encourage and promote Walcha area as a 'change of life' location. Advocate

2.1.9 Encourage the development of additional rental accommodation in Walcha. Advocate

NSW Making it Happen – Premier's Priorities Links

- Creating Jobs – 150,000 new jobs by 2019
 - ✓ Jobs for NSW initiative
 - ✓ Extending payroll tax rebates
 - ✓ Providing incentives for non-payroll tax paying businesses to recruit
 - ✓ Creating jobs and apprenticeships for the construction sector through infrastructure investment

NSW Making it Happen – State Priorities Links

- Strong Budget and Economy
 - ✓ Making it easier to start a business
 - ✓ Encouraging business investment
 - ✓ Boosting apprenticeships

2036 Draft New England North West Regional Plan Links

- Prosperous urban centres with job opportunities
 - ✓ Direction 4.5: Grow tourism to support employment opportunities and urban centres
- Protect water, environment and heritage
 - ✓ Direction 5.1: Manage water resources for a growing economy and environmental sustainability

Other Relevant Plans and Strategies

- Walcha Local Environment Plan
- Strategic Regional Land Use Policy - New England North West Strategic Land Use Plan



Health



Goals and Strategies

CSP 3.1	Health services and facilities will be provided and where appropriate managed locally to meet the needs of the community.	Council's Role	
		Council's Role	Other Stakeholders
3.1.1	Maintain a viable, state-of-the-art Multi Purpose Service in Walcha.	Advocate	HLHN, DOH
3.1.2	Reinstate and maintain the blood donor collection facility in Walcha.	Advocate	HLHN, Red Cross
3.1.3	Maintain the Lavery Pathology Service in Walcha	Advocate	HNEAH
3.1.4	Provide general practitioners and allied health workers commensurate with the community's need..	Advocate	HLHN
3.1.5	Ensure adequate transport is provided for community members to access local, regional and State services	Leader Facilitator Advocate	HLHN, DOH, NSW Transport

CSP 3.2	The public health and wellbeing of the community will be protected and enhanced.	Council's Role	Other Stakeholders
3.2.1	Foster preventative health systems and activities that promote physical, mental and social health.	Leader Facilitator Advocate	HLHN, DOH
3.2.2	Promote the benefits of, and provide opportunities for, all children to be immunized.	Facilitator	HLHN, DOH
3.2.3	Maintain the availability and quality of water for use in rural areas.	Leader Facilitator	HLHN, DOH
3.2.4	Ensure that the disposal of liquid waste in rural areas is carried out in a healthy manner without negative environmental impact.	Leader	OEH, NOW
3.2.5	Maintain cemeteries in accordance with the community's needs and expectations.	Leader	Community

NSW Making it Happen – Premier's Priorities Links

- Improving service levels in hospitals
- Tackling childhood obesity
 - ✓ Reduce overweight and obesity rates of children.

NSW Making it Happen – State Priorities Links

- Better Services

2036 Draft New England North West Regional Plan Links

- Goal 3: Communities resilient to change, with housing choice and services that meet shifting needs and lifestyles.
 - ✓ Direction 3.5: Increase access to health and education services.
 - ◆ Action: 3.5.1 Realign health services to the needs of the community.

Other Relevant Plans and Strategies

- NSW State Health Plan: Towards 2021
- NSW Rural Health Plan Towards 2021



Education and Training



Goals and Strategies

CSP 4.1	Education and training opportunities will be provided that deliver the skills and knowledge needed to advance the community.	Council's Role	Other Stakeholders
4.1.1	Provide quality and accessible preschool and early intervention facilities for children in a safe and supportive environment.	Leader Facilitator Advocate	DFCS
4.1.2	Ensure access to education for all children in outlying villages.	Advocate	Transport NSW DEC, Schools
4.1.3	Support education, training and employment programs for trainees and apprentices and adult education.	Leader Facilitator Advocate	DEC
4.1.4	Provide financial incentives for local children who study and work locally in an area of identified skill shortage for an agreed number of years..	Leader Facilitator Advocate	
4.1.5	Promote Council as a viable and rewarding career choice..	Leader	

NSW Making it Happen – Premier’s Priorities Links

- Improving education results
 - ✓ Increase the proportion of NSW students in the top two NAPLAN bands by 8%

2036 Draft New England North West Regional Plan Links

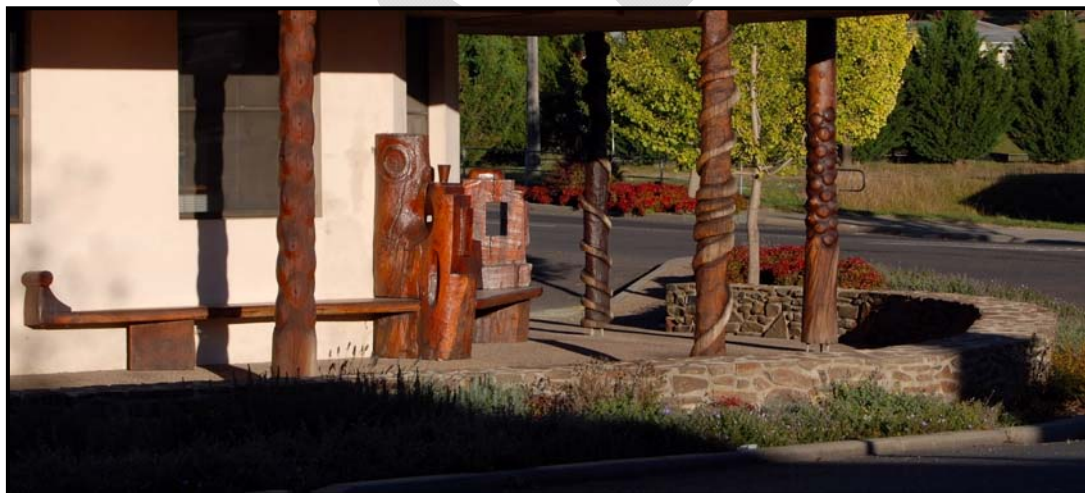
- Goal 3: Communities resilient to change, with housing choice and services that meet shifting needs and lifestyles.
 - ✓ Direction 3.5: Increase access to health and education services.
 - ◆ Action: 3.5.2 Facilitate planning for additional primary and secondary school places.

Other Relevant Plans and Strategies

- Department of Education and Communities. Strategic Plan for 2012-2017



Stronger Community



Goals and Strategies

CSP 5.1	Social services will be planned, maintained and coordinated so that they meet the current and future needs of all groups in the community.	Council's Role	Other Stakeholders
5.1.1	Provide and support Community Care and Meals on Wheels programs so that they reach the appropriate clientele.	Leader Facilitator	ADHC
5.1.2	Support activities that provide meaningful engagement and social interaction.	Leader Facilitator	Community Groups

5.1.3	Support current volunteer efforts and encourage volunteer participation.	Leader Advocate	Community Groups
5.1.4	Employ and support local social and youth workers to assist the community.	Leader Facilitator Advocate	DFCS
CSP 5.2	The existing strong community spirit and pride will be protected and promoted.	Council's Role	Other Stakeholders
5.2.1	Support and promote participation in community events.	Leader Facilitator	Community Groups
5.2.2	Encourage and support outlying communities to have their own identity through the development of community infrastructure.	Leader Facilitator	
5.2.3	Support service, sporting and other community groups.	Leader	Community Groups
CSP 5.3	Walcha's cultural identity will be enhanced.	Council's Role	Other Stakeholders
5.3.1	Promote and support Walcha as the premier agricultural area of New England.	Leader Facilitator Advocate	
5.3.2	Make the "Open Air Gallery" theme an integral part of the development of the Walcha Local Government Area.	Leader	Arts NSW
5.3.3	Support the activities of cultural organisations.	Leader Facilitator	
5.3.4	Preserve, support and promote the history of Walcha.	Leader	
CSP 5.4	Walcha's Aboriginal communities will be supported and strengthened.	Council's Role	Other Stakeholders
5.4.1	Increase effective partnerships with, and develop the capacity of, Aboriginal communities.	Leader Facilitator	Amaroo LALC
5.4.2	Support improvements in the quality, availability and suitability of Aboriginal housing.	Advocate	Northern Tablelands RALC, Amaroo LALC
5.4.3	Manage the water and sewerage systems at Summervale Village.	Leader	DPI Water, DAA

5.4.4	Ensure that Aboriginal children have access to early childhood education and early intervention services.	Facilitator	DFCS
5.4.5	Increase and support meaningful, long term and equal opportunities for Aboriginal employment.	Leader Facilitator	
CSP 5.5	Young people will be retained and supported to live in Walcha.	Council's Role	Other Stakeholders
5.5.1	Seek, monitor and respond to requests from the youth population.	Leader Facilitator Advocate	
CSP 5.6	People of all ages and abilities will be encouraged to participate in cultural, recreational and sporting activities.	Council's Role	Other Stakeholders
5.6.1	Maintain and improve library, sporting and recreational facilities.	Leader	CNRL
5.6.2	Strengthen organisations and groups providing cultural, recreational and sporting activities.	Leader Facilitator	DSR
CSP 5.7	Community members will be given the opportunity to develop their leadership skills so that they can better participate in the leadership of the community.	Council's Role	Other Stakeholders
5.7.1	Encourage and support community members to develop leadership skills.	Leader Advocate	Community Groups
5.7.2	Identify and support community members and activities that have the capacity to improve people's quality of life.	Leader	Community Groups
5.7.3	Provide opportunities for community members to become involved in the management of the community.	Leader	Community Groups

NSW Making it Happen – Premier's Priorities Links

- Reducing Youth homelessness

NSW Making it Happen – State Priorities Links

- Infrastructure
 - ✓ Increasing housing supply
 - ✓ Transitioning to the National Disability Insurance Scheme
 - ✓ Creating sustainable social housing

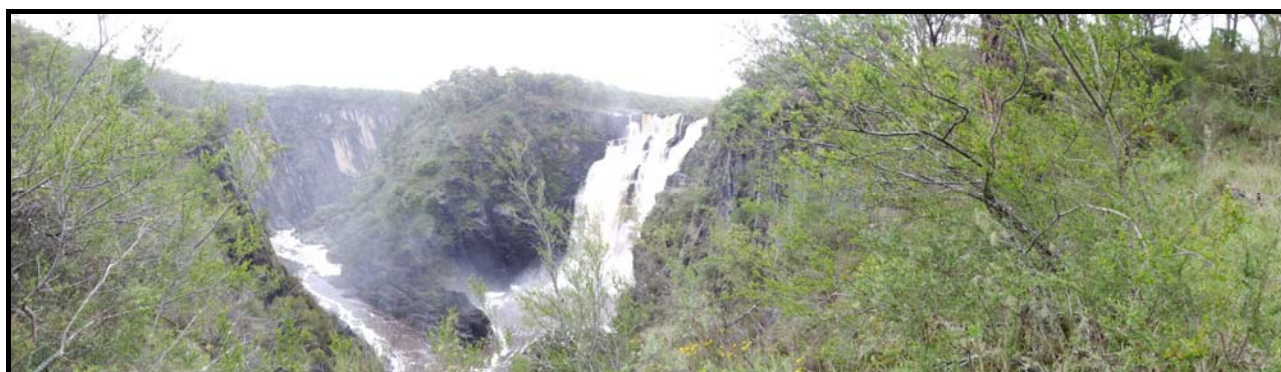
- Better Services
 - ✓ Improving Aboriginal education outcomes
 - ✓ Increasing cultural participation

Other Relevant Plans and Strategies

- 2036 Draft New England North West Regional Plan



Local Environment & Liveable Communities



Goals and Strategies

CSP 6.1	Walcha's distinct and diverse natural and built environment will be protected and enhanced.	Council's Role	Other Stakeholders
6.1.1	Maintain and strengthen partnerships with organisations responsible for natural resource management.	Leader	NPWS, LLS, Landcare Groups, SNELC
6.1.2	Promote sustainable development and protection of our natural resources through the planning system.	Leader	DOPI
6.1.3	Address the impact of climate change on the community.	Leader	OEH
6.1.4	Protect and enhance biodiversity, native vegetation, river and soil health.	Leader	LLS, OEH
6.1.5	Engage and support the community to undertake sustainable natural resource management and protect Walcha's natural environment.	Leader	OEH, LLS, DOPI
6.1.6	Provide the framework for improvements in efficiency and liveability of a range of compatible land uses and development types	Leader	DOPI
6.1.7	Manage Land Contamination through the planning and development control process	Leader	
CSP 6.2	Solid waste will be managed in a sustainable manner with a continuing reduction in waste generation and disposal to landfill.	Council's Role	Other Stakeholders
6.2.1	Develop and promote programs that increase the participation of the community in recycling.	Leader	EPA, NIRW

6.2.2	Implement alternate and affordable processes that reduce waste going to landfill.	Leader	EPA
6.2.3	Monitor and oppose any move to apply the Waste and Environment Levy on the Walcha Local Government Area.	Advocate	EPA
6.2.4	Manage solid waste in an efficient, affordable and sustainable manner.	Leader	EPA
CSP 6.3	Water supply and sewerage services will be physically and environmentally sensitive.	Council's Role	Other Stakeholders
6.3.1	Implement the recommendations of the Integrated Water Cycle Management Strategy and other water and sewer management plans.	Leader	DPI Water, NRCMA, NCMA
6.3.2	Provide additional off creek storage capacity to drought proof Walcha while minimising the impact of water extraction from the Macdonald River.	Leader	DPI Water, NRCMA, NCMA
6.3.3	Identify possible new water sources.	Leader	DPI Water, NRCMA, NCMA
CSP 6.4	Walcha will increase the use and production of renewable energy.	Council's Role	Other Stakeholders
6.4.1	Establish (with partners) alternate renewable energy supplies that will exceed the energy needs of our community.	Facilitator	Aust Govt
CSP 6.5	Agricultural activities will be environmentally sustainable.	Council's Role	Other Stakeholders
6.5.1	Protect and promote farming practices using the principles of ecologically sustainable development.	Facilitator	DPI, Landcare Groups, LLS
CSP 6.6	The character of Walcha and its surrounding villages will be maintained while protecting the productivity of our rural land	Council's Role	Other Stakeholders
6.6.1	Maintain the character of the Walcha Local Government Area through orderly development of the natural and built environment.	Leader Facilitator	DPI
6.6.2	Ensure that sufficient land is available to meet the demand for appropriate land uses	Leader Advocate	DPI
6.6.3	Prevent agricultural land from being developed in ways that reduce its productivity	Leader Facilitator	DPI, DTIRIS, LLS
6.6.4	Enhance the Walcha Local Government Area so that it continues to be an attractive place to live, work and visit	Leader Advocate	

NSW Making it Happen – Premier’s Priorities Links

- Building Infrastructure
 - ✓ Key infrastructure projects to be delivered on time and on budget
- Keeping our environment clean
 - ✓ Reduce the volume of litter
- Faster housing approvals

2036 Draft New England North West Regional Plan Links

- Goal 1: A growing and diversified agricultural sector
- Goal 2: A diversified economy through the management of mineral and energy resources including renewable energy generation
- Goal 5: Protected water, environment and heritage.

Other Relevant Plans and Strategies

- Northern Tablelands Local Land Services Strategic Plan
- North West Local Land Services Strategic Plan
- Walcha Local Environmental Plan
- Australian Government Roads to Recovery Program



Keeping People Safe



Goals and Strategies

CSP 7.1	Police stations and staff numbers will be provided to effectively control and reduce crime and antisocial behaviour and to keep our community safe.	Council's Role	Other Stakeholders
7.1.1	Lobby to ensure that the existing number of police stations is maintained and that they are staffed with fully active officers.	Advocate	NSW Police
7.1.2	Minimise crime and antisocial behaviour.	Advocate	Liquor Accord, Walcha CCC
CSP 7.2	Emergency services will be provided to ensure the safety of our community and visitors.	Council's Role	Other Stakeholders
7.2.1	Maintain viable and state-of-the-art emergency services in Walcha capable of adequately dealing with local needs.	Facilitator Advocate	NSW Police, SES, RFS, FRNSW, Ambulance, Westpac Rescue, Angel Flight, CareFlight
7.2.2	Develop and promote responsible ownership of animals.	Leader Facilitator	DLG

NSW Making it Happen – Premier’s Priorities Links

- Reducing domestic violence
- Protecting our kids

NSW Making it Happen – State Priorities Links

- Safer Communities
 - ✓ Reducing violent crime
 - ◆ LGAs to have stable or falling reported violent crime rates by 2019
 - ✓ Reducing adult re-offending

Other Relevant Plans and Strategies

- 2036 Draft New England North West Regional Plan



Better Government



Goals and Strategies

Deputy Mayor Clint Lyon

Mayor Eric Noakes

CSP 8.1	Walcha Council will exemplify good leadership, mutual respect and trust by being inclusive, ensuring open information and communication and encouraging active participation at all levels.	Council's Role	Other Stakeholders
8.1.1	Councillors will exhibit leadership on Council and regional committees as well as in community organisation.	Leader	OLG
8.1.2	Provide a framework for the efficient and effective administration of Council.	Leader	OLG

CSP 8.2	Council rate funding for local government projects will be supplemented by income generated from other sources.	Council's Role	Other Stakeholders
8.2.1	Maintain a stable and secure financial structure for Council.	Leader	
8.2.2	Encourage and support entrepreneurial activities.	Leader Facilitator	
8.2.3	Identify surplus Council owned assets for development or possible sale to be invested in infrastructure reserve.	Leader	
8.2.4	Maintain and improve Council owned building and land assets.	Leader	
8.2.5	Involve the community in the identification of infrastructure projects.	Leader	
CSP 8.3	The boundaries of the Walcha Local Government Area will be modified to reflect existing and developing communities of interest.	Council's Role	Other Stakeholders
8.3.1	Modify the boundaries of the Walcha Local Government Area to reflect existing and developing communities of interest.	Leader	TRC, USC, DLG

NSW Making it Happen – Premier's Priorities Links

- Improving government services
 - ✓ Improve customer satisfaction with key government services every year, this term of government

NSW Making it Happen – State Priorities Links

- Strong budget and economy
 - ✓ Accelerating major project assessment
 - ✓ Protecting our credit rating
 - ✓ Delivering strong budgets
- Better services
 - ✓ Better government digital services

Other Relevant Plans and Strategies

- 2036 Draft New England North West Regional Plan

Abbreviations

ADHC	Ageing, Disability and Home Care
ALGA	Australian Local Government Association
CCC	Community Consultative Committee
CMA	Catchment Management Authority
CNRL	Central Northern Regional Libraries
DAA	Aboriginal Affairs NSW
DAGJ	Department of Attorney General and Justice
DEC	Department of Education and Communities
DFCS	Department of Family and Community Services
DLG	Division of Local Government
DOH	Department of Health
DOPI	Department of Planning and Infrastructure
DPC	Department of Premier and Cabinet
DPI	Department of Primary Industries
DoI	NSW Department of Industry
HACC	Home and Community Care
HCRCMA	Hunter-Central Rivers Catchment Management Authority
HLHN	Hunter Local Health Network
IMMI	Department of Immigration and Citizenship
LALC	Local Area Land Council
LLS	Local Land Services
LGNSW	Local Government New South Wales
NCMA	Namoi Catchment Management Authority
NIRW	Northern Inland Regional Waste Office of Water Office of Environment and Heritage
OSR	Office of Sport and Recreation
DPW	NSW Public Works
NPWS	Parks and Wildlife Group
NRCMA	Northern Rivers Catchment Management Authority
RFS	Rural Fire Service of NSW
RMS	Roads and Maritime Services
SES	State Emergency Service of NSW
SNELC	Southern New England Land Care
TRC	Tamworth Regional Council
USC	Uralla Shire Council

List of community groups

Australia Day Committee
Bergen-Op-Zoom Landcare Group (BOZO)
Country Women's Association
Country Women's Association – Niangala Branch
Country Women's Association – Yarrowitch Branch
Friends of Riverview (Presbyterian Aged Persons Hostel)
GlenGro Landcare Group
Ingleba Hall Trustees
Library Reading Group
Lions Club of Walcha
Lower Apsley Landcare Group
MacDonald River Working Dog Club
Multi Purpose Centre Committee
NSW Farmers Association
NSW Farmers Association Nowendoc Branch
Niangala Hall Committee
Niangala Parents & Citizens Association
Niangala Playgroup
Niangala Tennis Club
Nowendoc Bushmen's Carnival Association.
Nowendoc Hall Trustees
Nowendoc Parents & Citizens Association
Nowendoc Recreation Grounds Trust – Nowendoc Sports Ground
Nowendoc Tennis Committee
Nowendoc Union Church
Oxley Darts Club
Oxley Riders
Quota Club of Walcha
Returned Service League Women's Auxiliary
Rotary Club of Walcha
St Patrick's Parents & Friends Association
St Patrick's School Board
St Paul's Presbyterian Church Walcha
St Paul's Presbyterian Church Women's Association
St Vincent De Paul Society
Tia Union Church
United Hospital Auxiliary Incorporated Walcha Branch
Walcha Amateur Basketball Association
Walcha and District Tennis Club
Walcha Baa-Baas Golden Oldies
Walcha Bowling and Recreation Club
Walcha Bowling Club Fishing Club
Walcha Boy Scouts Association
Walcha Bridge Club
Walcha Bushmen's Carnival Association
Walcha Campdrafters Club
Walcha Central School Council
Walcha Central School Parents & Citizens Association
Walcha Community Centre Committee
Walcha Community Consultative Committee
Walcha Creative Arts Centre
Walcha Cutting Club
Walcha District Cricket Association
Walcha District Historical Society
Walcha District Soccer Club

Walcha Ex-Services Club
Walcha Ex-Services Indoor Bowlers Club
Walcha Ex-Services Snooker Club
Walcha Ex-Services Tennis Club
Walcha Garden Club
Walcha Golf Associates – Ladies
Walcha Golf Club Limited
Walcha Gun Club
Walcha Indoor Hockey Association – Junior
Walcha Indoor Hockey Association
Walcha Jockey Club
Walcha Junior Cricket Association
Walcha Junior Rugby League Football Club
Walcha Junior Rugby Union
Walcha Men's Shed Inc
Walcha Musical Society
Walcha Pony Club
Walcha Poultry Club
Walcha Races Social Committee
Walcha Ram Breeders Group
Walcha Returned Services League
Walcha Rugby League Club
Walcha Rugby Union Club
Walcha Salt Water Fishing Club
Walcha Show Society
Walcha Squash Club
Walcha State Emergency Service
Walcha Support Group
Walcha Swimming Club
Walcha Touch Football Association
Walcha Town and Country Club Inc
Walcha Veterans Golfers
Walcha Volunteer Fire Brigade
Yarrowitch Parents & Citizens Association
Yarrowitch Memorial Hall Trustees
Yarrowitch Rodeo Association
Woolbrook Community Development Committee
Woolbrook Parents & Citizens Association

List of Walcha Council Committees

Arts Advisory Committee
Beautification & Tidy Towns Committee
Community Care Committee
Work Health & Safety Committee
Plant Committee
Preschool Advisory Committee
Roads Management Committee
Staff Committee
Staff Consultative Committee
Traffic Committee
Waste Management Committee
Youth Advisory Committee