



## Community Strategic Plan

# Walcha – 2027



Prepared in accordance with the requirements of the Local Government (Planning and Reporting) Amendment Act 2009

Adopted by Walcha Council on TBA

## Document History

Version	Date	Details
A – E		Drafts prepared and amended based on consultation with the community and Council.
1	25 May 2011	Adopted by Council
R3	In progress	June 2013 Review – after Council meeting 29/5/2013
R4	26 June 2013	Adopted by Council
R5	January 2017	Drafts being prepared.
R6	February 2017	Draft prepared for Public Exhibition

# Contents

<b>Introduction</b>	<b>4</b>
<b>The development of our community strategic plan</b>	<b>5</b>
<b>Walcha – who and where</b>	<b>6</b>
<b>Guiding principles</b>	<b>8</b>
<b>State and regional context</b>	<b>8</b>
<b>How has Walcha 2027 originally developed?</b>	<b>8</b>
<b>Issues and challenges</b>	<b>10</b>
<b>Framework</b>	<b>11</b>
<b>Vision statement</b>	<b>12</b>
<b>How to read Walcha 2027</b>	<b>13</b>
<b>Themes and outcomes</b>	<b>14</b>
<b>Goals and strategies</b>	<b>16</b>
<b>Transport</b>	<b>16</b>
<b>Business and Jobs</b>	<b>18</b>
<b>Health</b>	<b>20</b>
<b>Education and Training</b>	<b>22</b>
<b>Stronger Community</b>	<b>24</b>
<b>Local Environment &amp; Liveable Communities</b>	<b>28</b>
<b>Keeping People Safe</b>	<b>31</b>
<b>Better Government</b>	<b>33</b>
<b>Abbreviations</b>	<b>36</b>
<b>List of community groups</b>	<b>37</b>
<b>List of Walcha Council Committees</b>	<b>38</b>

## Introduction

Walcha 2025 is the blueprint for the future of Walcha Local Government Area. It represents the vision, aspirations, goals, priorities and challenges for our community. The purpose of Walcha 2025 is to:

- ❖ Describe the vision and goals the community has for this local government area.
- ❖ Outline the strategies to achieve the vision and goals.
- ❖ Provide a long term focus for decision making and resource allocation.
- ❖ Provide a basis for measuring our progress.
- ❖ Provide an opportunity for community participation in decision making.
- ❖ Address social, economic, environmental and civic leadership issues.

Walcha 2027 has been developed by the community and will be maintained and implemented by Walcha Council on behalf of the community. It is a plan for the future of the Local Government Area and will be a guide for other levels of government, private businesses and non-government agencies.

The Plan was first adopted by Council in May 2011 and reviewed by Council in 2013. This Plan is now being revised and updated with the goal to be adopted by June 2017.

## The development of our community strategic plan

As a result of legislation enacted in October 2009, all New South Wales local councils are required by the Local Government Act 1993 to develop a community strategic plan. The plan must:

- ❖ Have a long-term focus, with a minimum of 10 years.
- ❖ Address the key issues of social, environmental and economic sustainability as well as civic leadership.
- ❖ Be delivered as a partnership between Council, state agencies, community groups and individuals.
- ❖ Consider the State Plan and any relevant State or regional draft plans and strategies.
- ❖ Have regard for an adopted community engagement strategy, showing how the Council will communicate with and consult its community to develop a draft plan.
- ❖ Provide for a resourcing strategy that describes how community assets will be used in the future, how the Council workforce will be managed to deliver the desired plan outcomes and a financial plan to show how the plan will be funded.
- ❖ Give consideration to the expected levels of service expressed by the community.
- ❖ Include a community vision statement, strategic objectives and strategies for achieving the objectives.
- ❖ Identify assessment methods for determining whether the objectives are being achieved.
- ❖ Outline how progress in implementing the plan will be measured and monitored
- ❖ Provide for the Council to progressively report to the community on progress and achievements.

## Walcha – who and where

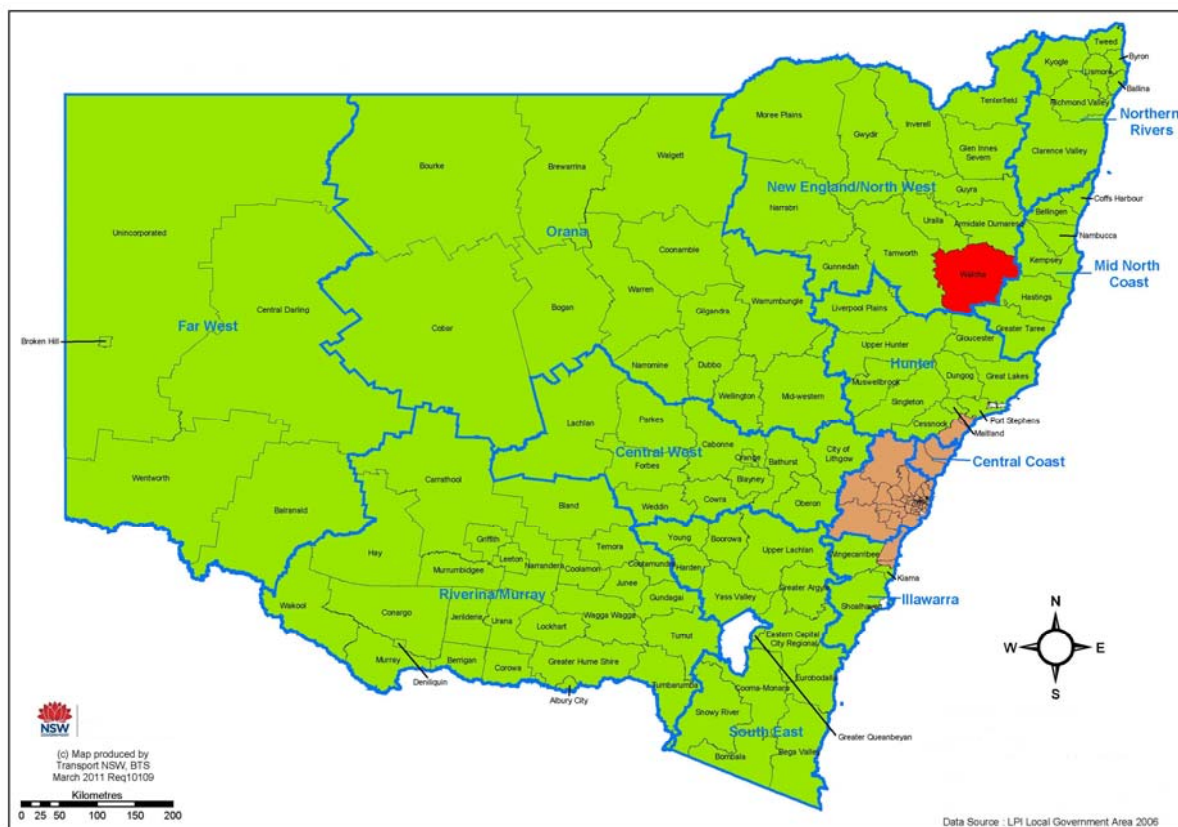
Walcha is located in the beautiful and very productive New England Tablelands region of New South Wales. The Walcha Local Government Area has an area of 640,858 hectares and a total population of 3,187 people.

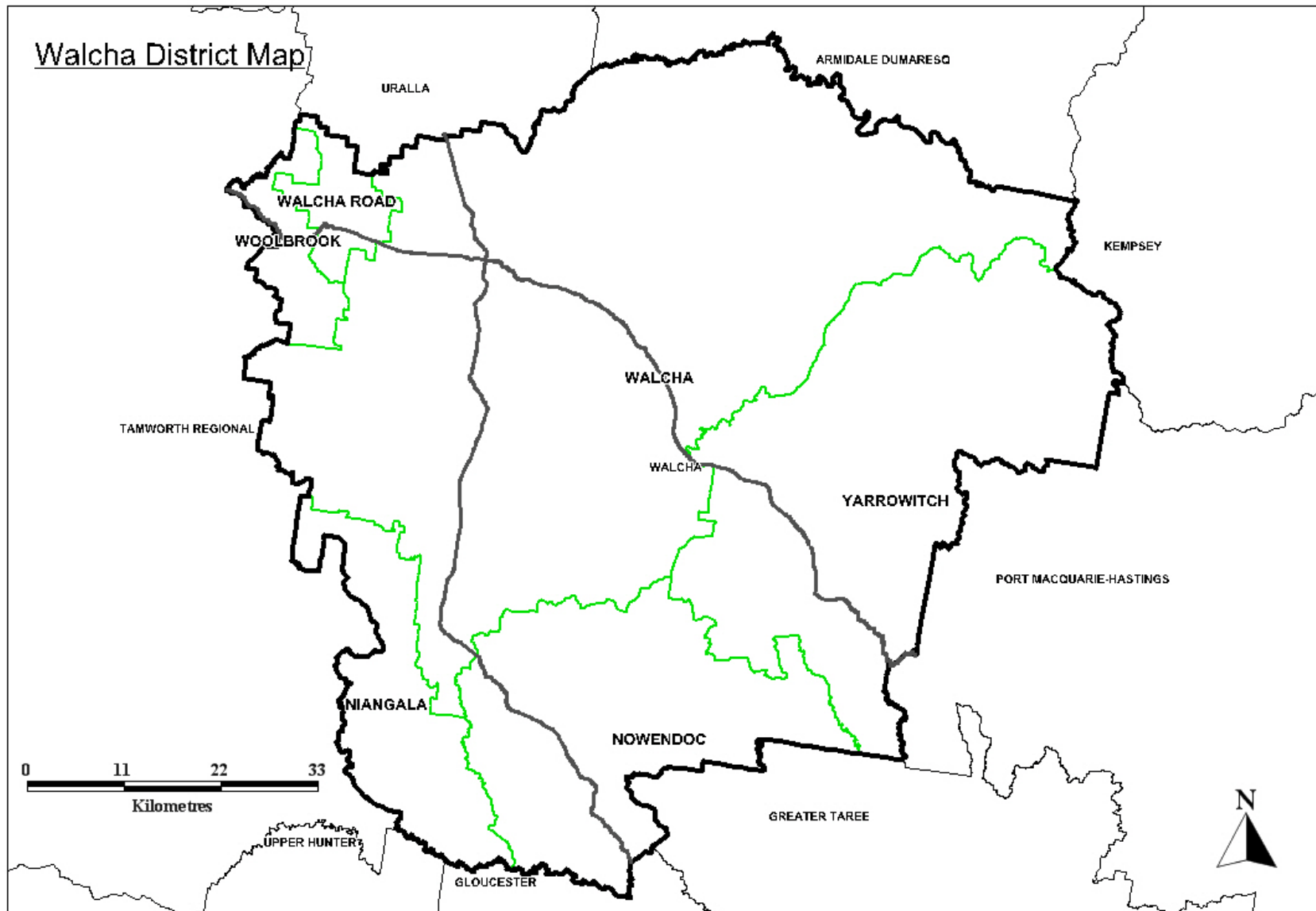
The town of Walcha (pronounced wolka) is 1,067 metres above sea level and can be reached by road, rail and air.

With 184,000 hectares of national park and wilderness including parts of the world heritage listed Central Eastern Rainforest Reserves, approximately 50,000 hectares of state forests and a network of excellent trout waters, Walcha provides the opportunity for some of the most magnificent eco-experiences in Australia.

Apart from these wonderful eco-tourism destinations, the Area has a lot to offer. It is one of the most productive agricultural regions in Australia. It is also a major hardwood timber supplier and is a significant supplier of softwood.

## Walcha Council [New South Wales](#)





## Guiding principles

The principles and values that underpin the framework for developing Walcha 2027 are social justice and sustainability. These principles and values were genuinely considered when developing the goals and strategies contained in this plan. All goals and strategies seek to attain an outcome that is sustainable and strives for equity, access, participation and equal rights, particularly for the disadvantaged and vulnerable.

### Social Justice

Equity:	Decisions should reflect equality in the prioritising and allocation of resources.
Access:	All people should have access to services, resources and opportunities to maintain and improve their quality of life.
Participation:	Everyone should have the opportunity to genuinely participate in decisions which affect their lives.
Rights:	Equal rights should be established and promoted, with opportunities provided for people from diverse linguistic, cultural and religious backgrounds to participate in community life.

### Sustainability

Walcha 2027 has the foundations and principles of sustainability. Sustainability describes the integration of environmental, social, economic and governance goals, processes and performances. However, these elements are not always in harmony.

## State and regional context

It is important that the Plan also be considered in a State and regional context as this will have an impact on the Walcha Local Government Area. The NSW Making it Happen – Premier’s Priorities and State Priorities and the Draft New England North West Regional Plan were considered during the review of Walcha 2027 and the relevant priority areas have been referenced in each theme.

## How has Walcha 2027 originally developed?

Walcha 2027 as developed by the community has become the blueprint for the future of the Walcha Local Government Area. A number of methods were used to gather feedback from a wide range of people in our community including residents, business owners, Councillors, government agencies, Council staff and other stakeholders.

The following is a list of the focus groups that have been consulted.

### Focus Group

Community Care Women’s Group and Advisory Committee

Woolbrook School Community

Walcha Men’s Shed

Beautification Committee, Arts Committee, Country Women’s Association and Walcha Historical Society



### **Focus Group**

Community Care Men's Group  
Preschool / Family Day Care / Early Intervention / Child Care  
Groups  
Walcha Rotary Club  
Walcha Central School Parents and Citizens  
Yarrowitch Community  
Brackendale / Tia Community  
Nowendoc Community  
Aboriginal Education Consultative Group  
Walcha Central School Staff  
Landcare groups, Department of the Environment and Climate  
Change and Southern New England Landcare  
Niangala School Community  
Woolbrook Community  
Ingleba Community  
Walcha Quota Club  
Walcha Council Indoor Staff  
Religious Contingent  
Transport Companies  
Emergency Services  
Walcha Council Outdoor Staff  
Tourism Groups  
Festival / Events groups  
St Patricks School Board  
State Government Organisations  
Youth Committee  
Hospital Staff  
Apsley Riverview Staff  
Lions and Lions Ladies Clubs  
Sporting Groups, Business Houses and Public Invitation

Engagement with the community is ongoing throughout the life of the Plan and the Community Engagement Strategy will be used to carry out future reviews.

# Issues and challenges

The issues and challenges that were identified when Walcha – 2027 was first developed still remain. They include:

## **Improving the Economic Sustainability of Walcha.**

### **Maintaining the Feel and Identity of Walcha**

- ❖ Representation and leadership.
- ❖ Reversing decline and achieving critical population size
- ❖ Age succession of volunteers.
- ❖ Retaining families in Walcha.
- ❖ Public community transport.
- ❖ Maintaining health providers, police and key agencies.
- ❖ Self sufficiency in energy and water.
- ❖ Remaining an appealing competitive community.
- ❖ Transportation and the road network

### **Retaining and Attracting Young People Walcha**

- ❖ Promote trades apprentices and traineeships.

### **Maintaining Environmentally Sustainable Agricultural Activities**

- ❖ Outside pressures e.g. unreasonable rules and regulations imposed by others.
- ❖ Education partnerships with city centric sensitivities around agriculture.
- ❖ The potential affect of the Murray-Darling Basin Authority.

### **Attracting New Enterprises and Jobs**

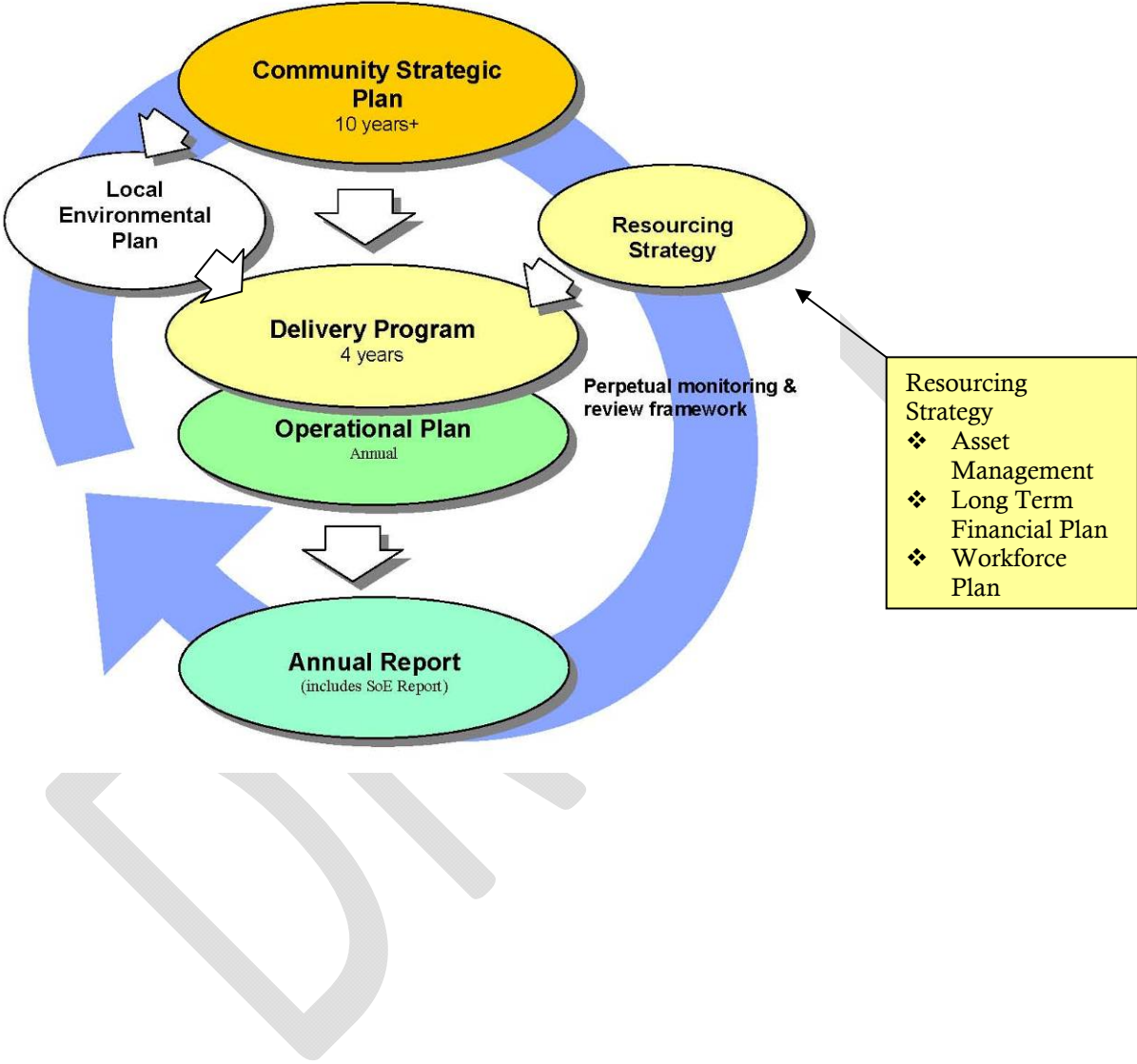
- ❖ Attract new enterprises and value adding to existing business.
- ❖ Difficulty of attracting support funding.

### **Environment**

- ❖ Climate change
- ❖ Renewable energy

# Framework

Walcha 2027 was developed to fit into the framework required by the NSW Government. It is the overarching document that is supported and integrated into all of Council’s other planning documentation.



## Vision statement

**To be a vibrant, welcoming, resilient and sustainable community that supports our citizens, businesses, industries and environments.**

The content of Walcha 2027 was developed to achieve the Vision taking into account the current and anticipated challenges and issues as well as other plans and strategies relevant to the Walcha Local Government Area.

In the Vision Statement the term 'environments' not only includes the natural environment but also the man-made or built environment and the social and cultural environment that has and will continue to shape the Walcha community.

## How to read Walcha 2027

Walcha 2027 is comprised of eight themes. They are:

- ❖ Transport
- ❖ Business and Jobs
- ❖ Health
- ❖ Education and Training
- ❖ Stronger Community
- ❖ Local Environment and Liveable Communities
- ❖ Keeping People Safe
- ❖ Better Government

These themes provide the focus and direction for the development of goals and strategies. The goals and strategies create the framework for the delivery of sustainable and equitable outcomes to achieve our vision.

Each theme contains a number of goals which are the aspirations or destinations as identified or described for 2027 and beyond. Each goal contains a number of strategies which were developed as the pathways to achieving these goals. Council's role in the implementation of each strategy is identified and defined as follows:

- Leader: Council will lead the development and implementation of detailed plans and actions to implement this strategy and to achieve progress towards the identified goal.
- Facilitator: Council will facilitate the development and implementation of detailed plans and actions with other stakeholders to implement this strategy and achieve progress toward the identified goal.
- Advocate: Council will advocate for the development and implementation of detailed plans and actions with other stakeholders to implement this strategy and achieve progress toward the identified goal.

Throughout Walcha 2027 the terms 'our' and 'community' are used frequently. Unless specified otherwise both terms are intended to mean the whole of the Walcha community including:

- ❖ Community groups and organisations
- ❖ Local businesses
- ❖ Walcha Council
- ❖ Non-government organisations.
- ❖ Government agencies.
- ❖ Individuals:
  - Ratepayers
  - Residents
  - People who work in the Local Government Area
  - Visitors
  - Anyone with an interest in the future of the Local Government Area.

Unless specified otherwise, the term 'Walcha' includes not only the area within the township of Walcha but also the area within the whole of the Local Government Area managed by Walcha Council.

# Themes and outcomes

## Transport

CSP 1.1 Walcha will be serviced by an integrated and efficient transport network.

## Business and Jobs

CSP 2.1 Commercial and tourist development will be promoted and encouraged to grow in harmony with the natural environment, to take maximum advantage of commercial opportunities and to increase local employment.

## Health

CSP 3.1 Health services and facilities will be provided and where appropriate managed locally to meet the needs of the community.

CSP 3.2 The public health and wellbeing of the community will be protected and enhanced.

## Education and Training

CSP 4.1 Education and training opportunities will be provided that deliver the skills and knowledge needed to advance the community.

## Stronger Community

CSP 5.1 Social services will be planned, maintained and coordinated so that they meet the current and future needs of all groups in the community.

CSP 5.2 The existing strong community spirit and pride will be fostered, promoted and encouraged.

CSP 5.3 Walcha's cultural identity will be enhanced.

CSP 5.4 Walcha's Aboriginal communities will be supported and strengthened.

CSP 5.5 Young people will be retained and supported to live in Walcha.

CSP 5.6 People of all ages will be encouraged to participate in cultural, recreational and sporting activities.

CSP 5.7 Community members will be given the opportunity to develop their leadership skills so that they can better participate in the leadership of the community.

CSP 5.8 The impact of the rising cost of living on vulnerable members of the community will be reduced.

## Local Environment & Liveable Communities

CSP 6.1 Walcha's distinct and diverse natural and built environment will be protected and enhanced.

CSP 6.2 Solid waste will be managed in a sustainable manner with a continuing reduction in waste generation and disposal to landfill.

CSP 6.3 Water supply and sewerage services will be physically and environmentally sensitive.

CSP 6.4 Walcha will increase the use and production of renewable energy.

CSP 6.5 Agricultural activities will be environmentally sustainable.

CSP 6.6 The character of Walcha and its surrounding villages will be maintained while protecting the productivity of our rural land.

## Keeping People Safe

CSP 7.1 Police stations and staff numbers will be provided to effectively control and reduce crime and antisocial behaviour and to keep our community safe.

CSP 7.2 Services will be provided to ensure the safety of our community and visitors.

## Better Government

CSP 8.1 Walcha Council will exemplify good leadership, mutual respect and trust by being inclusive, ensuring open information and communication and encouraging active participation at all levels.

CSP 8.2 Council rate funding for local government projects will be supplemented by income generated from other sources.

CSP 8.3 The boundaries of the Walcha Local Government Area will be modified to reflect existing and developing communities of interest.

CSP 8.4 Local government will be recognised in the Australian Constitution.

## Goals and strategies

### Transport



#### Goals and Strategies

CSP 1.1	Walcha will be serviced by an integrated and efficient transport network.	Council's Role	Other Stakeholders
1.1.1	Develop and maintain a safe and efficient local road and bridge network.	Leader Facilitator Advocate	Transport for NSW, Aust Govt
1.1.2	Maintain safe and efficient regional and state road links to, from and through the Walcha Local Government Area.	Leader Advocate	Transport for NSW, Aust Govt
1.1.3	Maintain and increase the rail passenger service and the use of rail for freight.	Advocate	Transport for NSW
1.1.4	Maintain and improve the standard and competitiveness of our regional air services.	Advocate	Aust Govt
1.1.5	Improve community and public transport.	Facilitator Advocate	Transport for NSW
1.1.6	Provide and maintain facilities for the safe movement of pedestrian and cycle traffic.	Leader Facilitator Advocate	NSW Govt
1.1.7	Provide adequate and appropriate parking.	Leader Facilitator	Transport for NSW



**NSW Making it Happen – State Priorities Links**

- Infrastructure
  - ✓ Improving road travel reliability
- Better services
  - ✓ Ensure on-time running for public transport

**Other Relevant Plans and Strategies**

- 2036 Draft New England North West Regional Plan



## Business and Jobs



### Goals and Strategies

CSP 2.1	Commercial and tourist development will be promoted and encouraged to grow in harmony with the natural environment, to take maximum advantage of commercial opportunities and to increase local employment.	Council's Role	Other Stakeholders
2.1.1	Maintain and improve the appearance of the Walcha Local Government Area to increase tourist and commercial activity.	Leader	Community Groups, Council Committees
2.1.2	Develop and market tourism products targeting the "Touring by Road" market and other markets.	Leader	Destination NSW
2.1.3	Develop activities that encourage increased visitation frequency and stay length.	Leader Facilitator	Destination NSW
2.1.4	Assist, support and encourage the establishment and / or expansion of local businesses.	Advocate	DPI
2.1.5	Promote Walcha's suitability for the aged care community and associated industries.	Leader Facilitator Advocate	ADHC
2.1.6	Develop an environment that will attract technology or internet based industry to come to Walcha.	Advocate	Telecommunication providers NBN
2.1.7	Provide the services that appeal to "young" workers e.g. childcare, medical, housing, sporting facilities and parks.	Leader, Advocate	

2.1.8 Promote job sharing for the young members of the rural sector. Advocate

2.1.9 Encourage and promote Walcha as a 'change of life' location. Advocate

2.1.10 Encourage the development of additional rental accommodation in Walcha Advocate Leader

#### ***NSW Making it Happen – Premier's Priorities Links***

- Creating Jobs – 150,000 new jobs by 2019
  - ✓ Jobs for NSW initiative
  - ✓ Extending payroll tax rebates
  - ✓ Providing incentives for non-payroll tax paying businesses to recruit
  - ✓ Creating jobs and apprenticeships for the construction sector through infrastructure investment.

#### ***NSW Making it Happen – State Priorities Links***

- Strong Budget and Economy
  - ✓ Making it easier to start a business
  - ✓ Encouraging business investment
  - ✓ Boosting apprenticeships

#### ***2036 Draft New England North West Regional Plan Links***

- Prosperous urban centres with job opportunities
  - ✓ Direction 4.5: Grow tourism to support employment opportunities and urban centres
- Protect water, environment and heritage
  - ✓ Direction 5.1: Manage water resources for a growing economy and environmental sustainability

#### ***Other Relevant Plans and Strategies***

- Walcha Local Environment Plan
- Strategic Regional Land Use Policy - New England North West Strategic Land Use Plan



# Health



## Goals and Strategies

CSP 3.1	Health services and facilities will be provided and where appropriate managed locally to meet the needs of the community.	Council's Role	Other Stakeholders
3.1.1	Maintain a viable, state-of-the-art Multi Purpose Service in Walcha.	Advocate	HLHN, DOH
3.1.2	Reinstate and maintain the blood donor collection facility in Walcha.	Advocate	HLHN, Red Cross
3.1.3	Ensure that all residents can access the health information and health services that are available.	Advocate	Riverview, HLHN
3.1.4	Maintain and strengthen the role of the Local Health Committee.	Advocate	HLHN
3.1.5	Provide general practitioners and allied health workers commensurate with the community's need.	Advocate	HLHN
3.1.6	Ensure adequate transport is provided for community members to access local, regional and State services.	Leader Facilitator Advocate	HLHN, DOH, NSW Transport

CSP 3.2	The public health and wellbeing of the community will be protected and enhanced.	Council's Role	Other Stakeholders
3.2.1	Foster preventative health systems and activities that promote physical, mental and social health.	Leader Facilitator Advocate	HLHN, DOH
3.2.2	Promote the benefits of, and provide opportunities for, all children to be immunized.	Facilitator	HLHN, DOH
3.2.3	Maintain the availability and quality of water for domestic use in rural areas.	Leader Facilitator	HLHN, DOH
3.2.4	Ensure that the disposal of liquid waste in rural areas is carried out in a healthy manner without negative environmental impact.	Leader	OEH, NOW
3.2.5	Maintain cemeteries in accordance with the community's needs and expectations.	Leader	
3.2.6	Maintain the Laverty Pathology Service in Walcha	Advocate	HNEAH,

#### **NSW Making it Happen – Premier's Priorities Links**

- Improving service levels in hospitals
- Tackling childhood obesity
  - ✓ Reduce overweight and obesity rates of children.

#### **NSW Making it Happen – State Priorities Links**

- Better Services

#### **2036 Draft New England North West Regional Plan Links**

- Goal 3: Communities resilient to change, with housing choice and services that meet shifting needs and lifestyles.
  - ✓ Direction 3.5: Increase access to health and education services.
    - ◆ Action: 3.5.1 Realign health services to the needs of the community.

#### **Other Relevant Plans and Strategies**

- NSW State Health Plan: Towards 2021
- NSW Rural Health Plan Towards 2021



## Education and Training



### Goals and Strategies

CSP 4.1	Education and training opportunities will be provided that deliver the skills and knowledge needed to advance the community.	Council's Role	Other Stakeholders
4.1.1	Provide quality and accessible preschool and early intervention facilities for children in a safe and supportive environment.	Leader Facilitator Advocate	DFCS
4.1.2	Ensure staffing numbers and transport subsidies are maintained so that outlying schools can continue to operate and provide effective K-6 education.	Advocate	Transport NSW DEC, Schools
4.1.3	Support education, training and employment programs for trainees and apprentices.	Leader Facilitator Advocate	DEC
4.1.4	Support universities and technical colleges to develop or maintain courses that allow local residents to attend part time.	Facilitator Advocate	DEC, TAFE, Universities
4.1.5	Provide financial incentives for local children who study and work locally in an area of identified skill shortage for an agreed number of years.	Leader Facilitator Advocate	

***NSW Making it Happen – Premier’s Priorities Links***

- Improving education results
  - ✓ Increase the proportion of NSW students in the top two NAPLAN bands by 8%

***2036 Draft New England North West Regional Plan Links***

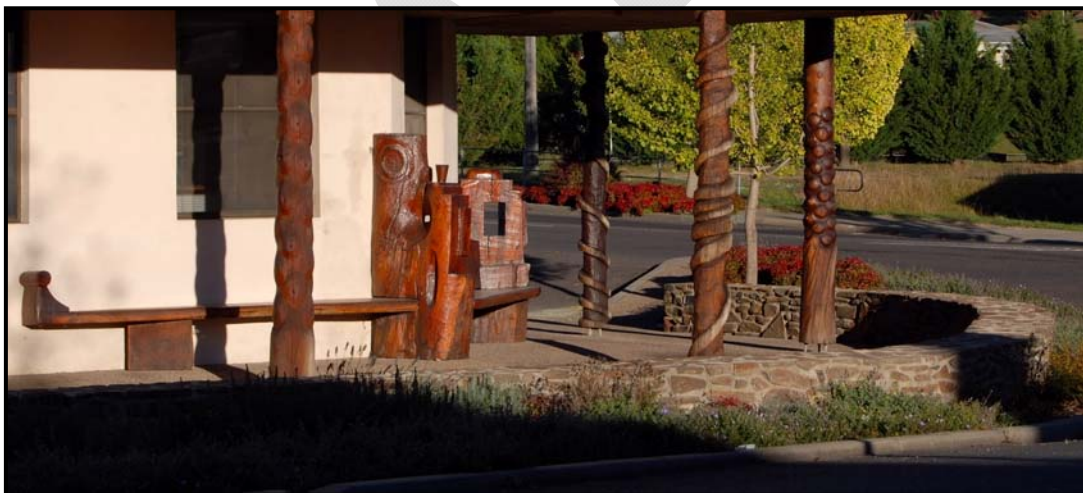
- Goal 3: Communities resilient to change, with housing choice and services that meet shifting needs and lifestyles.
  - ✓ Direction 3.5: Increase access to health and education services.
    - Action: 3.5.2 Facilitate planning for additional primary and secondary school places.

***Other Relevant Plans and Strategies***

- Department of Education and Communities. Strategic Plan for 2012-2017



## Stronger Community



### Goals and Strategies

CSP 5.1	Social services will be planned, maintained and coordinated so that they meet the current and future needs of all groups in the community.	Council's Role	Other Stakeholders
5.1.1	Provide and support Community Care and Meals on Wheels programs so that they reach the appropriate clientele.	Leader Facilitator	ADHC
5.1.2	Support activities that provide meaningful engagement and social interaction.	Leader Facilitator	Community Groups



5.1.3	Support current volunteer efforts and encourage volunteer participation.	Leader Advocate	Community Groups
5.1.4	Employ and support local social and youth workers to assist the community.	Leader Facilitator Advocator	DFCS
5.1.5	Educate and advise the community about available Government services.	Leader Facilitator	
<b>CSP 5.2</b>	<b>The existing strong community spirit and pride will be protected and promoted.</b>	<b>Council's Role</b>	<b>Other Stakeholders</b>
5.2.1	Support and promote participation in community events.	Leader Facilitator	Community Groups
5.2.2	Encourage and support outlying communities to have their own identity through the development of community infrastructure.	Leader Facilitator	
<b>CSP 5.3</b>	<b>Walcha's cultural identity will be enhanced.</b>	<b>Council's Role</b>	<b>Other Stakeholders</b>
5.3.1	Promote the history and current strength of Walcha as the premier agricultural area of the New England.	Leader Facilitator Advocate	
5.3.2	Make the "Open Air Gallery" theme an integral part of the development of the Walcha Local Government Area.	Leader	Arts NSW
5.3.3	Support the activities of cultural organisations.	Leader Facilitator	
5.3.4	Preserve the significant historical assets of the Walcha Local Government Area.	Leader	
<b>CSP 5.4</b>	<b>Walcha's Aboriginal communities will be supported and strengthened.</b>	<b>Council's Role</b>	<b>Other Stakeholders</b>
5.4.1	Increase effective partnerships with, and develop the capacity of, Aboriginal communities.	Leader Facilitator	Amaroo LALC
5.4.2	Support improvements in the quality, availability and suitability of Aboriginal housing.	Advocate	Northern Tablelands RALC, Amaroo LALC
5.4.3	Manage the water and sewerage systems at Summervale.	Leader	NOW, DAA

5.4.4	Ensure that Aboriginal children have access to early childhood education and early intervention services.	Facilitator	DFCS
5.4.5	Increase and support meaningful, long term and equal opportunities for Aboriginal employment.	Leader Facilitator	
<b>CSP 5.5</b>	<b>Young people will be retained and supported to live in Walcha.</b>	<b>Council's Role</b>	<b>Other Stakeholders</b>
5.5.1	Seek, monitor and respond to requests from the youth population.	Leader Facilitator Advocate	
<b>CSP 5.6</b>	<b>People of all ages will be encouraged to participate in cultural, recreational and sporting activities.</b>	<b>Council's Role</b>	<b>Other Stakeholders</b>
5.6.1	Maintain and improve library, sporting and recreational facilities.	Leader	CNRL
5.6.2	Strengthen organisations and groups providing cultural, recreational and sporting activities.	Leader Facilitator	DSR
<b>CSP 5.7</b>	<b>Community members will be given the opportunity to develop their leadership skills so that they can better participate in the leadership of the community.</b>	<b>Council's Role</b>	<b>Other Stakeholders</b>
5.7.1	Encourage and support community members to develop leadership skills.	Leader Advocate	Community Groups
5.7.2	Identify and support community members and activities that have the capacity to improve people's quality of life.	Leader	Community Groups
5.7.3	Provide opportunities for community members to become involved in the management of the community.	Leader	Community Groups
<b>CSP 5.8</b>	<b>The impact of the rising cost of living on vulnerable members of the community will be reduced.</b>	<b>Council's Role</b>	<b>Other Stakeholders</b>
5.8.1	Support measures that reduce the cost of essential service for community members who are financially disadvantaged.	Leader Advocate	

***NSW Making it Happen – Premier’s Priorities Links***

- Reducing Youth homelessness

***NSW Making it Happen – State Priorities Links***

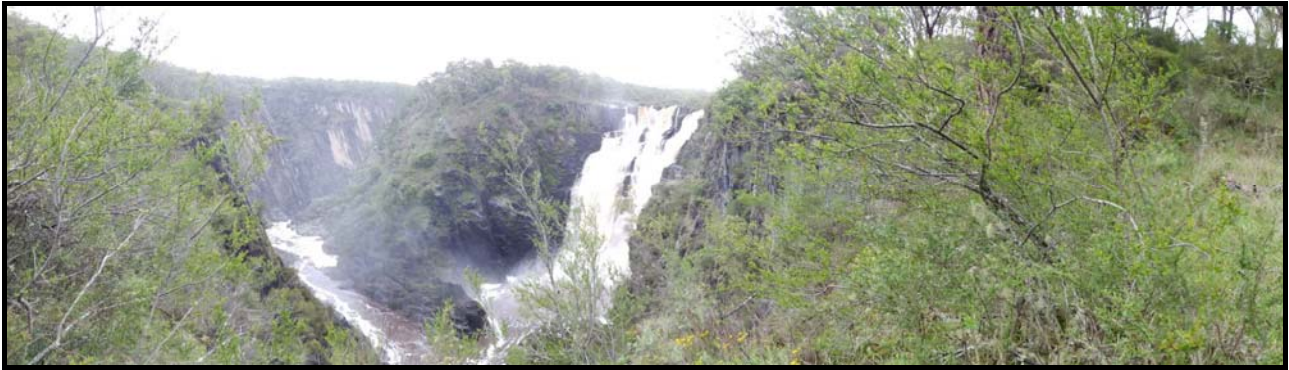
- Infrastructure
  - ✓ Increasing housing supply
  - ✓ Transitioning to the National Disability Insurance Scheme
  - ✓ Creating sustainable social housing
- Better Services
  - ✓ Improving Aboriginal education outcomes
  - ✓ Increasing cultural participation

***Other Relevant Plans and Strategies***

- 2036 Draft New England North West Regional Plan

DRAFT

## Local Environment & Liveable Communities



### Goals and Strategies

CSP 6.1	Walcha's distinct and diverse natural and built environment will be protected and enhanced.	Council's Role	Other Stakeholders
6.1.1	Maintain and strengthen partnerships with organisations responsible for natural resource management.	Leader	NPWS, LLS, Landcare Groups, SNELC
6.1.2	Promote sustainable development and protection of our natural resources through the planning system.	Leader	DOPI
6.1.3	Promote activities that reduce the volume of greenhouse gases emitted into the atmosphere.	Leader	OEH
6.1.4	Develop policies that address the impact of climate change on the community.	Leader	DOPI, OEH
6.1.5	Protect and enhance biodiversity, native vegetation, river and soil health.	Leader	OEH, LLS
6.1.6	Engage and support the community to undertake sustainable natural resource management and protect Walcha's natural environment.	Leader	DOPI, OEH, LLS
6.1.7	Provide the framework for improvements in efficiency and liveability of a range of compatible land uses and development types.	Leader	DOPI
CSP 6.2	Solid waste will be managed in a sustainable manner with a continuing reduction in waste generation and disposal to landfill.	Council's Role	Other Stakeholders
6.2.1	Develop and promote programs that increase the participation of the community in recycling and reducing waste going to landfill.	Leader	OEH, NIRW

6.2.2	Implement alternate and affordable processes that reduce waste going to landfill.	Leader	OEH
6.2.3	Monitor and oppose any move to apply the Waste and Environment Levy on the Walcha Local Government Area.	Advocate	OEH
6.2.4	Manage solid waste in an efficient, affordable and sustainable manner.	Leader	OEH
<b>CSP 6.3</b>	<b>Water supply and sewerage services will be physically and environmentally sensitive.</b>	<b>Council's Role</b>	<b>Other Stakeholders</b>
6.3.1	Implement the recommendations of the Integrated Water Cycle Management Strategy and other water and sewer management plans.	Leader	NOW, NRCMA, NCMA
6.3.2	Provide additional off creek storage capacity to drought proof Walcha while minimising the impact of water extraction from the McDonald River.	Leader	NOW, NRCMA, NCMA
6.3.3	Identify possible new water sources.	Leader	NOW, NRCMA, NCMA
6.3.4	Promote water use efficiency and water saving.	Leader	NOW, NRCMA, NCMA
<b>CSP 6.4</b>	<b>Walcha will increase the use and production of renewable energy.</b>	<b>Council's Role</b>	<b>Other Stakeholders</b>
6.4.1	Establish (with partners) alternate renewable energy supplies that will exceed the energy needs of our community.	Facilitator	Aust Govt
<b>CSP 6.5</b>	<b>Agricultural activities will be environmentally sustainable.</b>	<b>Council's Role</b>	<b>Other Stakeholders</b>
6.5.1	Protect and promote farming practices using the principles of ecologically sustainable development.	Facilitator	DPI, Landcare Groups, LLS
<b>CSP 6.6</b>	<b>The character of Walcha and its surrounding villages will be maintained while protecting the productivity of our rural land</b>	<b>Council's Role</b>	<b>Other Stakeholders</b>
6.6.1	Maintain the character of the Walcha Local Government Area through orderly development of the natural and built environment.	Leader Facilitator	DPI
6.6.2	Ensure that sufficient land is available to meet the demand for appropriate land uses	Leader Advocate	DPI
6.6.3	Prevent agricultural land from being developed in ways that reduce its productivity	Leader Facilitator	DPI, DTIRIS, LLS

- 6.6.4** Enhance the Walcha Local Government Area so that it continues to be an attractive place to live, work and visit
- Leader  
Advocate

***NSW Making it Happen – Premier’s Priorities Links***

- Building Infrastructure
  - ✓ Key infrastructure projects to be delivered on time and on budget.
- Keeping our environment clean
  - ✓ Reduce the volume of litter.
- Faster housing approvals

***2036 Draft New England North West Regional Plan Links***

- Goal 1: A growing and diversified agricultural sector
- Goal 2: A diversified economy through the management of mineral and energy resources including renewable energy generation.
- Goal 5: Protected water, environment and heritage.

***Other Relevant Plans and Strategies***

- Northern Tablelands Local Land Services Strategic Plan
- North West Local Land Services Strategic Plan
- Walcha Local Environmental Plan
- Australian Government Roads to Recovery Program



# Keeping People Safe



## Goals and Strategies

<b>CSP 7.1</b>	<b>Police stations and staff numbers will be provided to effectively control and reduce crime and antisocial behaviour and to keep our community safe.</b>	<b>Council's Role</b>	<b>Other Stakeholders</b>
<b>7.1.1</b>	Ensure that the existing number of police stations is maintained and that they are staffed with fully active officers.	Advocate	NSW Police
<b>7.1.2</b>	Minimise crime and antisocial behaviour.	Advocate	Liquor Accord, Walcha CCC
<b>CSP 7.2</b>	<b>Emergency services will be provided to ensure the safety of our community and visitors.</b>	<b>Council's Role</b>	<b>Other Stakeholders</b>
<b>7.2.1</b>	Maintain viable and state-of-the-art emergency services in Walcha capable of adequately dealing with local needs.	Facilitator Advocate	NSW Police, SES, RFS, FRNSW, Ambulance, Westpac Rescue, Angel Flight, CareFlight
<b>7.2.2</b>	Ensure that local knowledge and rural-based skills play an integral part in the delivery and planning of emergency services by recognising their importance and protecting the right of staff to be trained in and make use of local knowledge and skills.	Facilitator Advocate	NSW Police, SES, RFS, FRNSW, Ambulance

7.2.3

Develop and promote responsible ownership of animals.

Leader  
Facilitator

DLG

**NSW Making it Happen – Premier’s Priorities Links**

- Reducing domestic violence
- Protecting our kids

**NSW Making it Happen – State Priorities Links**

- Safer Communities
  - ✓ Reducing violent crime
    - ◆ LGAs to have stable or falling reported violent crime rates by 2019.
  - ✓ Reducing adult re-offending

**Other Relevant Plans and Strategies**

- 2036 Draft New England North West Regional Plan





## Better Government



Deputy Mayor Clint Lyon

Mayor Eric Noakes

**Goals and Strategies**

CSP 8.1	Walcha Council will exemplify good leadership, mutual respect and trust by being inclusive, ensuring open information and communication and encouraging active participation at all levels.	Council's Role	Other Stakeholders
8.1.1	Councillors will exhibit leadership on Council and regional committees as well as in community organisation.	Leader	DLG
8.1.2	Ensure that all local organisations are accessible by the community.	Advocate	

8.1.3	Provide a framework for the efficient and effective administration of Council.	Leader	DLG
<b>CSP 8.2</b>	<b>Council rate funding for local government projects will be supplemented by income generated from other sources.</b>	<b>Council's Role</b>	<b>Other Stakeholders</b>
8.2.1	Maintain a stable and secure financial structure for Council.	Leader	
8.2.2	Encourage and support entrepreneurial activities.	Leader Facilitator	
8.2.3	Identify surplus Council owned assets for possible sale to be invested in infrastructure reserve.	Leader	
8.2.4	Maintain and improve Council owned building and land assets.	Leader	
8.2.5	Involve the community in the identification of infrastructure projects.	Leader	
8.2.6	Support actions that will give local government the right to determine their own rates and a fixed share of taxation.	Advocate	LGSA, COAG, Aust Govt
8.2.7	Seek grant funding wherever possible.	Leader	
<b>CSP 8.3</b>	<b>The boundaries of the Walcha Local Government Area will be modified to reflect existing and developing communities of interest.</b>	<b>Council's Role</b>	<b>Other Stakeholders</b>
8.3.1	Modify the boundaries of the Walcha Local Government Area to reflect existing and developing communities of interest.	Leader	TRC, USC, DLG
<b>CSP 8.4</b>	<b>Local government will be recognised in the Australian Constitution.</b>	<b>Council's Role</b>	<b>Other Stakeholders</b>
8.4.1	Work towards the constitutional recognition of local government.	Leader Advocate	ALGA, LGSA, Aust Govt

***NSW Making it Happen – Premier’s Priorities Links***

- Improving government services
  - ✓ Improve customer satisfaction with key government services every year, this term of government.

***NSW Making it Happen – State Priorities Links***

- Strong budget and economy
  - ✓ Accelerating major project assessment
  - ✓ Protecting our credit rating
  - ✓ Delivering strong budgets
- Better services
  - ✓ Better government digital services.

***Other Relevant Plans and Strategies***

- 2036 Draft New England North West Regional Plan

DRAFT

## Abbreviations

ADHC	Ageing, Disability and Home Care
ALGA	Australian Local Government Association
CCC	Community Consultative Committee
CMA	Catchment Management Authority
CNRL	Central Northern Regional Libraries
DAA	Aboriginal Affairs NSW
DAGJ	Department of Attorney General and Justice
DEC	Department of Education and Communities
DFCS	Department of Family and Community Services
DLG	Division of Local Government
DOH	Department of Health
DOPI	Department of Planning and Infrastructure
DPC	Department of Premier and Cabinet
DPI	Department of Primary Industries
DoI	NSW Department of Industry
HACC	Home and Community Care
HCRCMA	Hunter-Central Rivers Catchment Management Authority
HLHN	Hunter Local Health Network
IMMI	Department of Immigration and Citizenship
LALC	Local Area Land Council
LLS	Local Land Services
LGNSW	Local Government New South Wales
NCMA	Namoi Catchment Management Authority
NIRW	Northern Inland Regional Waste
NOW	Office of Water
OEH	Office of Environment and Heritage
OSR	Office of Sport and Recreation
DPW	NSW Public Works
NPWS	Parks and Wildlife Group
NRCMA	Northern Rivers Catchment Management Authority
RFS	Rural Fire Service of NSW
RMS	Roads and Maritime Services
SES	State Emergency Service of NSW
SNELC	Southern New England Land Care
TRC	Tamworth Regional Council
USC	Uralla Shire Council

## List of community groups

Australia Day Committee  
Bergen-Op-Zoom Landcare Group (BOZO)  
Country Women's Association  
Country Women's Association – Niangala Branch  
Country Women's Association – Yarrowitch Branch  
Friends of Riverview (Presbyterian Aged Persons Hostel)  
GlenGro Landcare Group  
Ingleba Hall Trustees  
Library Reading Group  
Lions Club of Walcha  
Lower Apsley Landcare Group  
MacDonald River Working Dog Club  
Multi Purpose Centre Committee  
NSW Farmers Association  
NSW Farmers Association Nowendoc Branch  
Niangala Hall Committee  
Niangala Parents & Citizens Association  
Niangala Playgroup  
Niangala Tennis Club  
Nowendoc Bushmen's Carnival Association.  
Nowendoc Hall Trustees  
Nowendoc Parents & Citizens Association  
Nowendoc Recreation Grounds Trust – Nowendoc Sports Ground  
Nowendoc Tennis Committee  
Nowendoc Union Church  
Oxley Darts Club  
Oxley Riders  
Quota Club of Walcha  
Returned Service League Women's Auxiliary  
Rotary Club of Walcha  
St Patrick's Parents & Friends Association  
St Patrick's School Board  
St Paul's Presbyterian Church Walcha  
St Paul's Presbyterian Church Women's Association  
St Vincent De Paul Society  
Tia Union Church  
United Hospital Auxiliary Incorporated Walcha Branch  
Walcha Amateur Basketball Association  
Walcha and District Tennis Club  
Walcha Baa-Baas Golden Oldies  
Walcha Bowling and Recreation Club  
Walcha Bowling Club Fishing Club  
Walcha Boy Scouts Association  
Walcha Bridge Club  
Walcha Bushmen's Carnival Association  
Walcha Campdrafters Club  
Walcha Central School Council  
Walcha Central School Parents & Citizens Association  
Walcha Community Centre Committee  
Walcha Community Consultative Committee  
Walcha Creative Arts Centre  
Walcha Cutting Club  
Walcha District Cricket Association  
Walcha District Historical Society  
Walcha District Soccer Club

Walcha Ex-Services Club  
Walcha Ex-Services Indoor Bowlers Club  
Walcha Ex-Services Snooker Club  
Walcha Ex-Services Tennis Club  
Walcha Garden Club  
Walcha Golf Associates – Ladies  
Walcha Golf Club Limited  
Walcha Gun Club  
Walcha Indoor Hockey Association – Junior  
Walcha Indoor Hockey Association  
Walcha Jockey Club  
Walcha Junior Cricket Association  
Walcha Junior Rugby League Football Club  
Walcha Junior Rugby Union  
Walcha Men’s Shed Inc  
Walcha Musical Society  
Walcha Pony Club  
Walcha Poultry Club  
Walcha Races Social Committee  
Walcha Ram Breeders Group  
Walcha Returned Services League  
Walcha Rugby League Club  
Walcha Rugby Union Club  
Walcha Salt Water Fishing Club  
Walcha Show Society  
Walcha Squash Club  
Walcha State Emergency Service  
Walcha Support Group  
Walcha Swimming Club  
Walcha Touch Football Association  
Walcha Town and Country Club Inc  
Walcha Veterans Golfers  
Walcha Volunteer Fire Brigade  
Yarrowitch Parents & Citizens Association  
Yarrowitch Memorial Hall Trustees  
Yarrowitch Rodeo Association  
Woolbrook Community Development Committee  
Woolbrook Parents & Citizens Association

## **List of Walcha Council Committees**

Arts Advisory Committee  
Beautification & Tidy Towns Committee  
Community Care Committee  
Work Health & Safety Committee  
Plant Committee  
Preschool Advisory Committee  
Roads Management Committee  
Staff Committee  
Staff Consultative Committee  
Traffic Committee  
Waste Management Committee  
Youth Advisory Committee