



WALCHA SKATEPARK PRECINCT RENEWAL

DRAFT CONCEPT REPORT

WALCHA COUNCIL

MAY 2022

CONVIC

PREPARED BY

CONVIC

FOR



REVISION HISTORY

REVISION	REVISION DATE	DETAILS	AUTHORISED	
			NAME / POSITION	SIGNATURE
A	31.05.2022	DRAFT ISSUE	BRYCE HINTON / Design Manager	
B	16.06.2022	DRAFT ISSUE	BRYCE HINTON / Design Manager	

© CONVIC Pty Ltd. All rights reserved.

CONVIC has prepared this document for the sole use of the Client and for a specific purpose, each as expressly stated in the document. No other party should rely on this document without the prior written consent of CONVIC. CONVIC undertakes no duty, nor accepts any responsibility, to any third party who may rely upon or use this document. This document has been prepared based on the Client's description of its requirements and CONVIC's experience, having regard to assumptions that CONVIC can reasonably be expected to make in accordance with sound professional principles. CONVIC may also have relied upon information provided by the Client and other third parties to prepare this document, some of which may not have been verified. Subject to the above conditions, this document may be transmitted, reproduced or disseminated only in its entirety.

CONTENTS

INTRODUCTION	03
SITE ANALYSIS	04
EXISTING SKATE CONTEXT	06
CONCEPTUAL PROGRESSION	07
DESIGN PROPOSAL	08
PALLETES	13
NEXT STEPS	16

INTRODUCTION

The Walcha Council are proposing a renewal to the existing Walcha Skatepark to develop it into a contemporary Youth Space facility. By utilising a holistic approach the design of the renewal will result in a dynamic and activated space that offers recreational and social experiences for members of Walcha and the wider Council community.

The Skatepark renewal aims to create a local level facility catering to the needs of young people of Walcha, and be part of the broader network of skateparks/youth recreation facilities attracting users from the wider region.

The following report explains the approach and principles utilised to create a comprehensive design response.



VISION | THE WALCHA SKATEPARK RENEWAL WILL PROVIDE A MULTI-DISCIPLINE STREET AND TRANSITION STYLE FACILITY CATERING FOR ALL SKILL LEVELS. IT WILL BE INVITING, FAMILY FRIENDLY AND CELEBRATE THE LOCAL COMMUNITY OF WALCHA.

THE NEW PRECINCT WILL CELEBRATE THE NATURAL LANDSCAPE OF WALCHA AND CREATE A VIBRANT AND ENJOYABLE SPACE WITHIN THE COMMUNITIES PUBLIC REALM.

SITE ANALYSIS

SITE CONTEXT

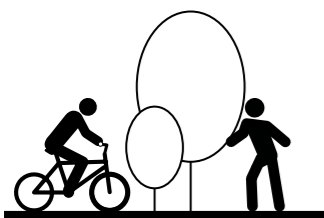
The existing Walcha Skatepark is a local level facility located off Pakington Street, Walcha. With the surrounding sports oval, sports club and town centre it has become a popular destination for all members of the community.

Nestled between the Apsley River, sports oval and established trees the site has opportunity to expand into adjacent southern spaces. The eastern edge of the site boundary is bordered by a public pedestrian pathway, the development must compliment this connection. The existing skatepark facility is showing signs of wear and tear with the design now obsolete with contemporary skatepark riding styles.

Toilet facilities are located adjacent the site, however there is no existing shade or shelter structure. This must be considered in the development along with fundamental drinking fountain, rubbish bin and seating amenity.






Bordering the ovals edge a row of significant mature trees follow the fence line. These trees must be protected and retained through the development with views maintained between the oval and skatepark area.

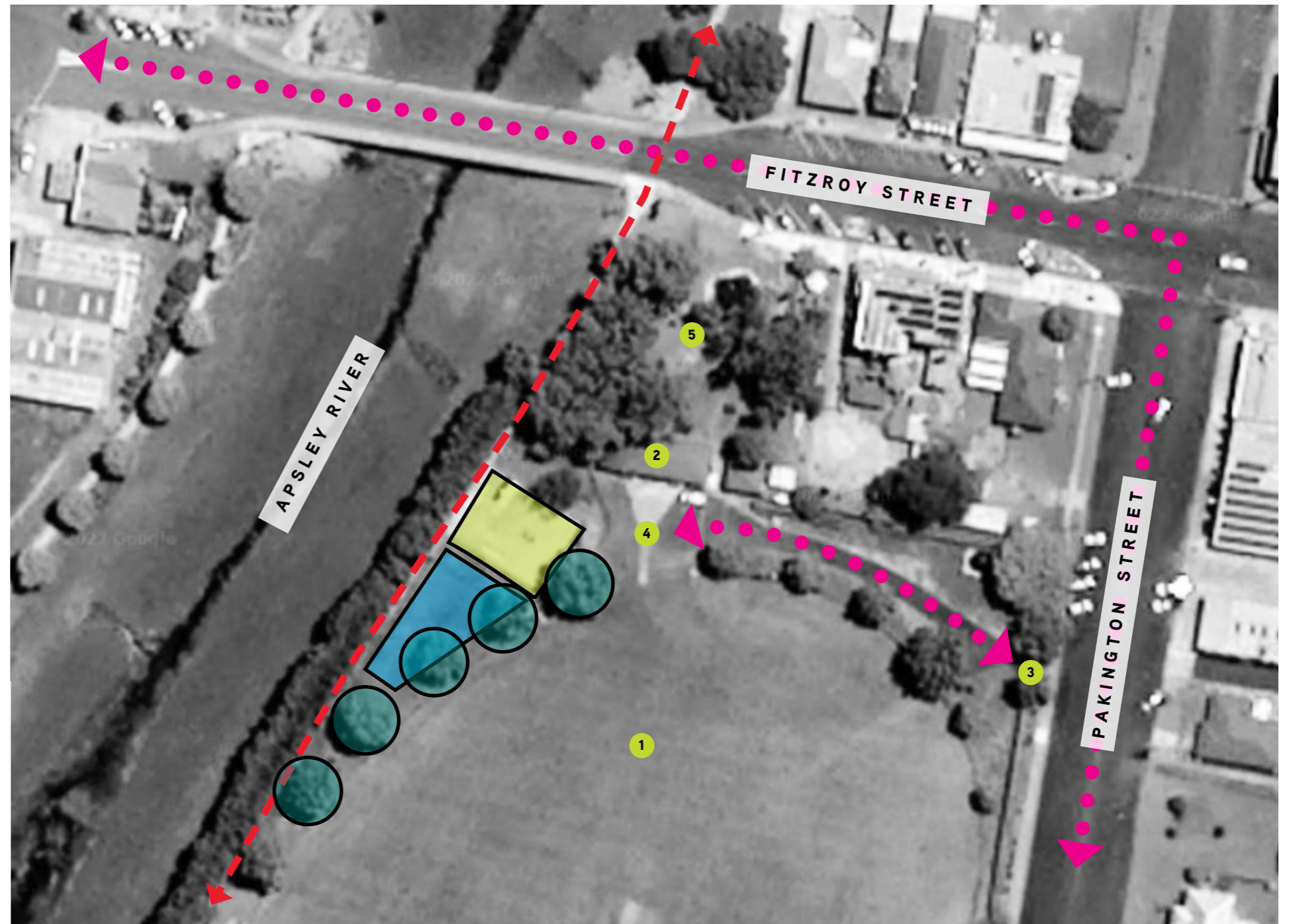
Overall, the renewal will be complimented by the surrounding sports infrastructure which will bring new life and further activate a youth precinct for the Walcha Council community.



SITE FEATURES

- 1 Sports Oval
- 2 Public Toilets
- 3 Site Entry
- 4 Carpark
- 5 Captain Cook Park

-  Existing Skatepark
-  Vacant Area to Extend
-  Traffic Routes
-  Pedestrian Footpath
-  Significant Trees



EXISTING PRECINCT

Built in 2001 the existing skatepark is local level facility consisting a mixture of concrete and steel elements. Since its construction the facility has deteriorated to a rough exposed aggregate surface creating a hazard to users. The majority of features in the park are obsolete and do not meet contemporary skate trends.

Connecting to a shared pathway on the Apsley River edge some seating is available for skatepark viewing. This vantage point within the site has great opportunity to develop as a viewing area and further connect with the shared footpath.

Fenced off to the sports oval the facility has poor CPTED principles and views to surrounding spaces. Opening this edge and connecting views to the oval must be explored in the development.



EXISTING SKATE CONTEXT

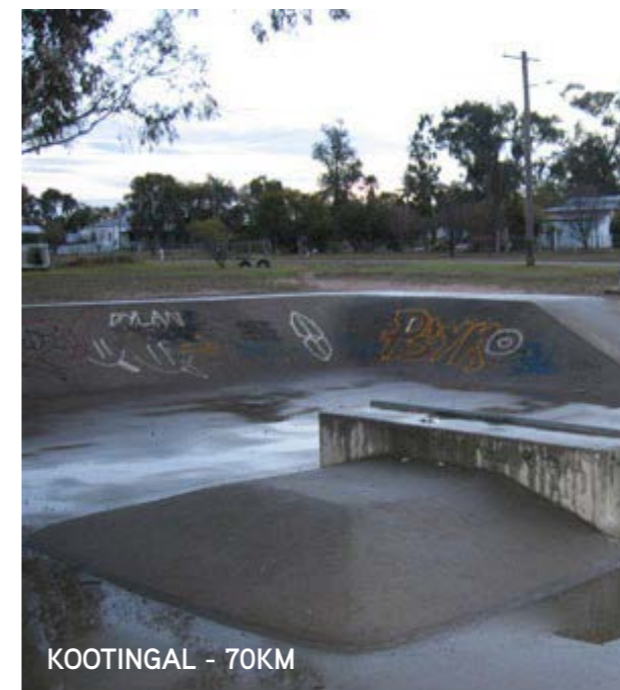
EXISTING SKATE CONTEXT

In order to determine the style of the Walcha Skatepark development it is important to undertake a study of skate facilities within close proximity. This investigation reviews their park typology and identifies gaps in the surrounding regions skate park provision. Skate facilities consist of three distinct styles: plaza, transition and combination.

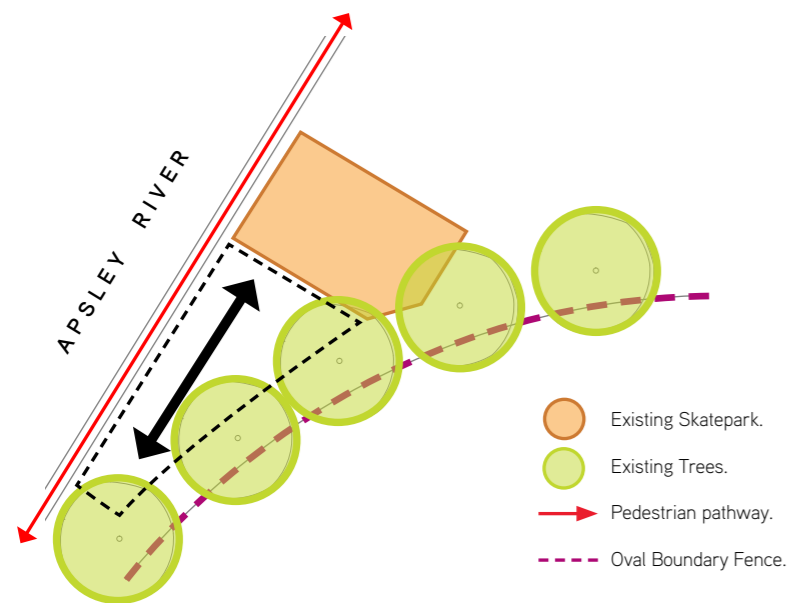
This study has identified that the region has a low number of facilities within an hours drive (100km) of the site. Convic have reviewed these facilities, however skateparks that are significantly old or do not meet current standards (ie. prefabricated steel ramps on slab) have not being included within this contextual analysis.

Many of the existing parks are combination style skateparks offering users a mix of different skate styles and skill levels. Most of the existing facilities are old-style skateparks that consist of features that are outdated and not meeting current skate trends. Often in these facilities, features are spaced in close proximity to each other significantly reducing the functional use of the space. However, the recently constructed project in Tamworth offers contemporary regional sized provision.

With this in mind it is advised that a flowy combination style facility will be best suited for the new Walcha Skatepark. Flow line areas will provide a range of features for all rider styles and abilities. These features will have a preference to beginner and intermediate level riders but also include elements that can be used differently by the more experienced. This will create a facility that enables skill development and compliments the ever growing network of skate parks within the Walcha Council municipality and broader region.

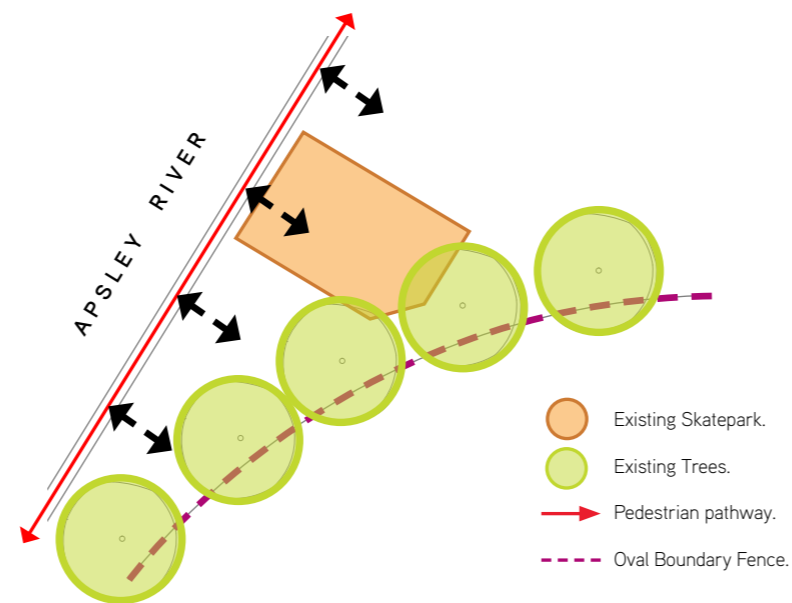


CONCEPTUAL PROGRESSION



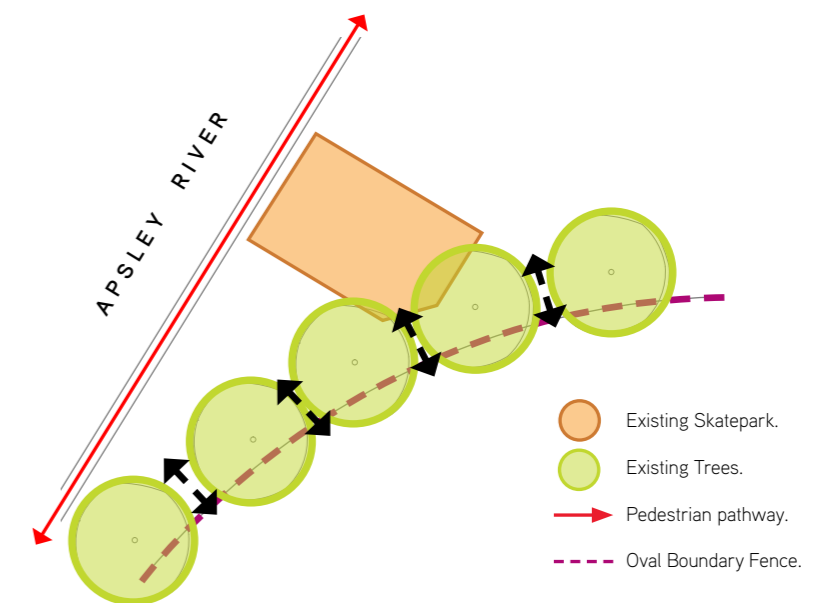
EXTEND FOOTPRINT SOUTH

The Skatepark renewal will extend into southern vacant space to maximize footprint. Restricted on other edges by close constraints the renewal will capitalise on vacant space to the south.



CONNECT TO PEDESTRIAN PATH

Bordering the West edge of the site the shared pedestrian path must be integrated within the design. Situated at a key vantage point seating and spectator areas must be integrated to look over the skatepark development and towards to the sports oval.



SPORTS OVAL VIEWS

The Eastern edge of the site is bordered by the sports oval and significant trees. This edge must be kept open and views between the two spaces maximized. The significant trees must also be protected and retained throughout the development.

DESIGN PROPOSAL

LEGEND

SKATE WORKS

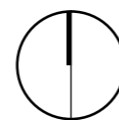
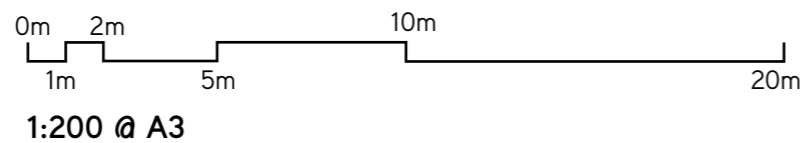
- 1 1200H Quarter Pipe
- 2 900H Quarter Pipe
- 3 500H Mogul
- 4 750H Spine
- 5 900H Volcano
- 6 Grind Over Box
- 7 350H Flat Bar
- 8 200H Manual Pad
- 9 450H Pump Track Mogul
- 10 900H Pump Track Berm
- 11 600H Spine

LANDSCAPE WORKS

- 1 Entry Path
- 2 Garden Bed Buffer
- 3 Half Court
- 4 3 Point Shoot Games
- 5 Futsal Soccer Goals
- 6 Shelter and Seating
- 7 Spectating Seating
- 8 Public BBQ Area
- 9 Existing Cricket Oval
- 10 Existing Fence
- 11 Existing Footpath
- 12 Existing Toilets
- 13 Existing Carpark



CLIENT



CONVIC

Unit 13, 46-50 Regent Street
 Richmond VIC 3121
 T (03) 9486 9899
 Convic.com

PROJECT
 WALCHA SKATEPARK
 PRECINCT RENEWAL

TITLE
 DRAFT CONCEPT PLAN

DATE
 31.05.2022

REVISION
 B

OVERVIEW 01

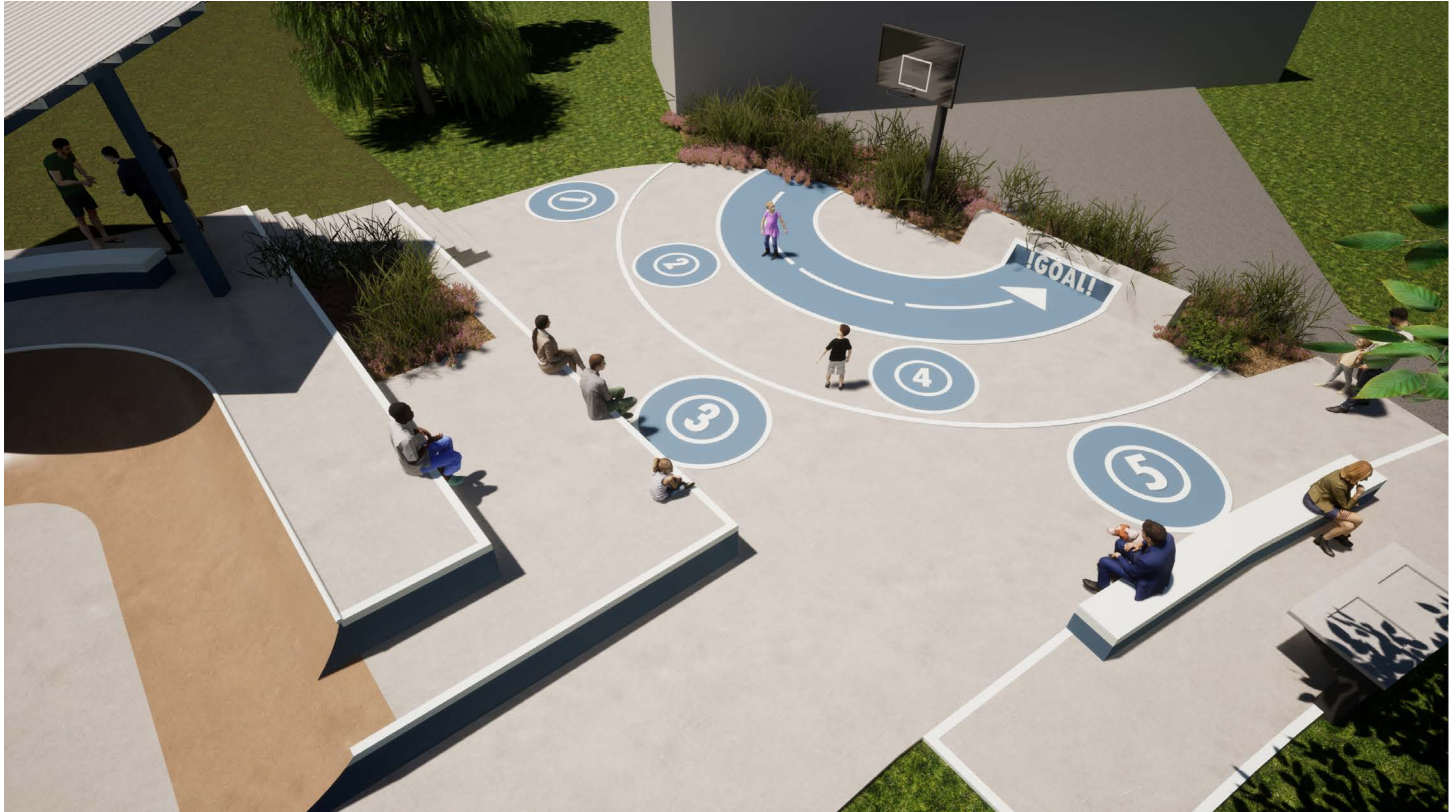


OVERVIEW 02



SKATEPARK





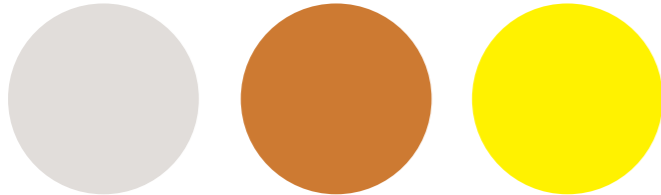
SKATEPARK PALETTE

SKATE REFERENCE IMAGES

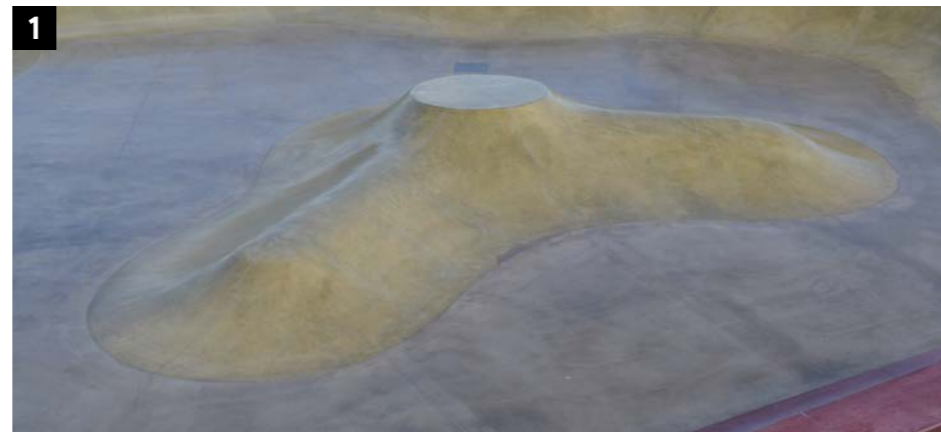
Skate obstacles have been designed to create a unique rider experience with features that are multifunctional and can be used in a variety of ways.

1. Moguls
2. Bank hip
3. Manual Pad
4. Quarter pipe

COLOUR PALETTE



COLOURED CONCRETE + HIGHLIGHTS



LANDSCAPE AND FURNITURE

LANDSCAPE REFERENCE IMAGES

Supporting landscape and amenity has developed to compliment the skatepark and draw users into the space. To create a family friendly precinct a half court, line marking games, seating and shelter areas have been included to spectate the action and actively involve all users with the space.

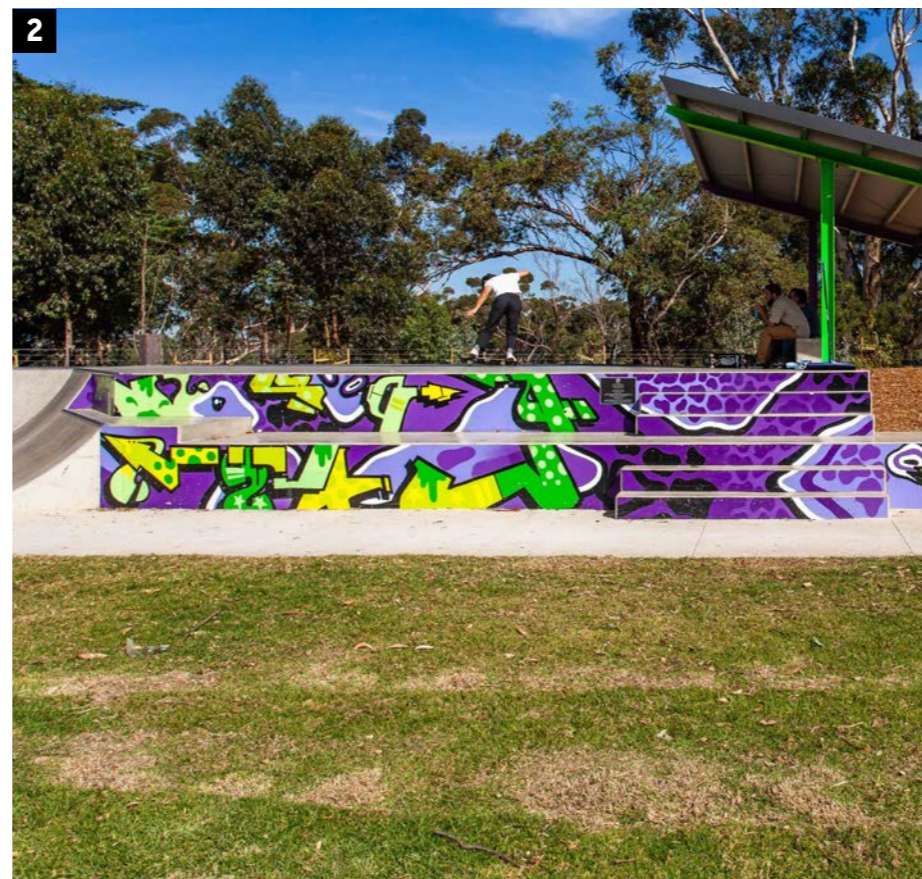
1. Shrub Planting Skate Buffer
2. Half Court / Line Marking Games
3. Skatepark Shelter
4. Spectator Seating



ARTWORK REFERENCE IMAGES

The design will explore artwork to the vertical faces of the facility. The terrace seating looking into the half court and skate block elements will become vibrant mural walls. Engaging local artists will further strengthen the communities relationship and ownership of the space.

1. Kwinana Outdoor Youth Space
2. Glenroy Skatepark



MOVING FORWARD

As a part of the ongoing design process for the development of the Walcha Skatepark Precinct Renewal, the draft design will be presented to Council for review and endorsement.

Pending the outcome of the Council review, it is expected that the draft concept will be followed with the subsequent stages:

- Draft Concept community consultation workshop for input to finalise design,
- Community feedback compiled and Final Concept design finalised accordingly,
- Developed Design and Tender documentation of detailed design works for construction.

As well as creating a truly relevant design, this review and community input will ensure the final concept design reflects community needs, user requirements and the overall project vision. This continued involvement connects the Walcha Council community with the project design process and ultimately creates a vested interest in the final outcome.

CONVIC

CREATE COMMUNITY

AUSTRALIA

UNIT 13, 46-50 REGENT STREET
RICHMOND VIC 3121 AUSTRALIA
T +61 3 9486 9899 F +61 3 9486 9088

MELBOURNE | SINGAPORE | DUBAI

CONVIC.COM