

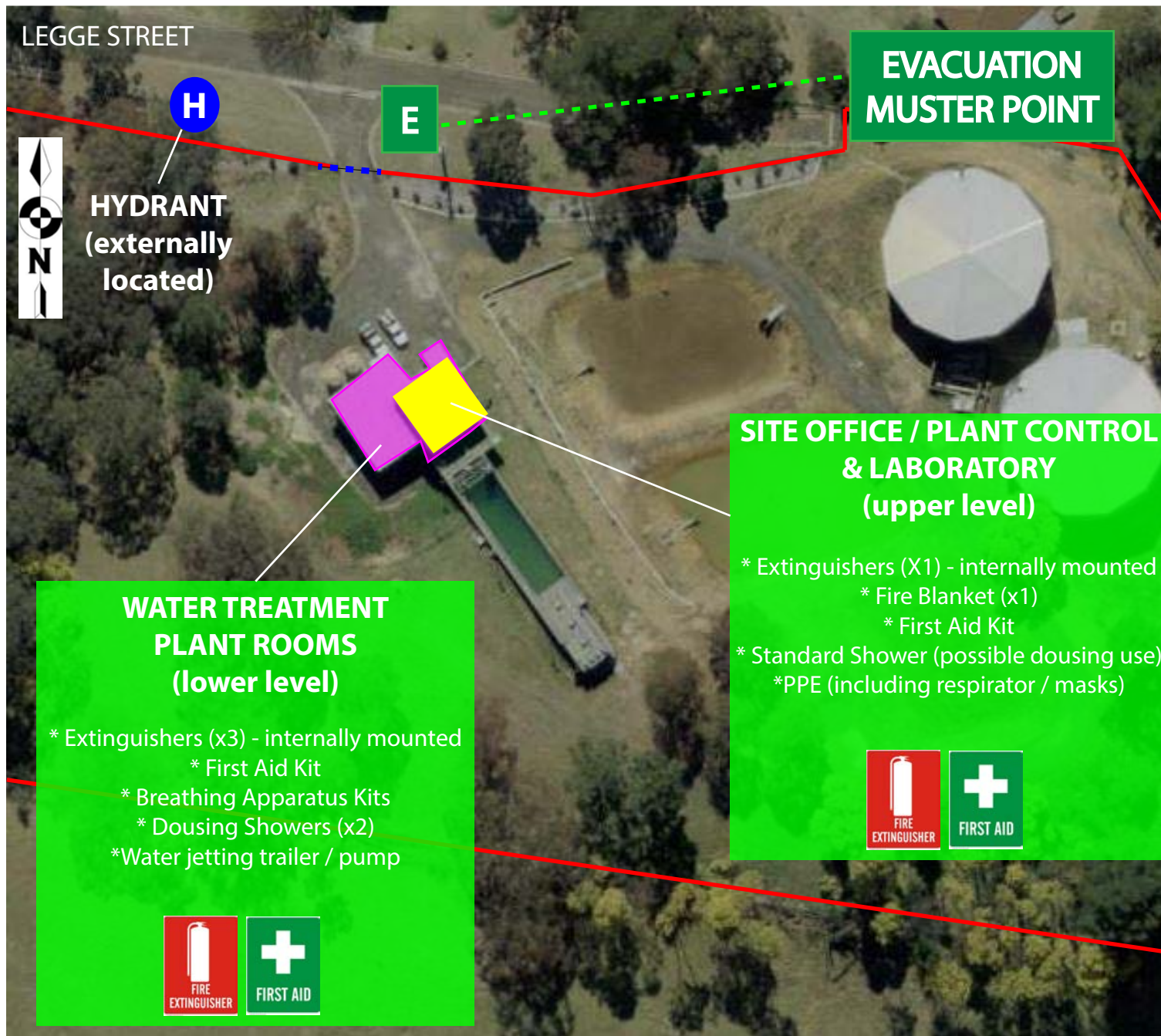
WALCHA WATER TREATMENT PLANT (WORKS) - EPL 2508

POLLUTANT LOCATIONS / SITE INFRASTRUCTURE



WALCHA WATER TREATMENT PLANT (WORKS) - EPL 2508

Emergency Equipment & Evacuation Muster Point



FIREFIGHTING WATER

HYDRANT SUPPLY FOR
RETICULATED WATER
LOCATED IN ROAD
RESERVE (LEGGE STREET)

FIRE WATER RUN-OFF
can be directed to
LAGOONS

downgradient (east) of
WATER TREATMENT
PLANT ROOMS and
retained by baffle weirs

EVACUATION MUSTER POINT

Use caution - electricity
supply lines overhead

PLANT / EQUIPMENT

NO heavy plant items
based permanently at
this site.

Portable (trailer mount)
pumps and ancillary
reticulation network
maintenance items
available for on / offsite
use if required.

WALCHA WATER TREATMENT PLANT (WORKS) - EPL 2508

DRAINAGE FLOWPATHS

